

The Pastellist

The Pastel Society of Australia Inc.

Established by John and Ivy Jeffrey in 1985

Welcome to the Pastel Society of Australia Inc.'s first newsletter for 2018!

We're looking forward to a great upcoming pastel year with Workshops, Demos and of course, our inaugural Pastel EXPO in September 2018!



Stay up to date by liking the PSA Facebook Page: 'Ozpastels'. This is where you can get reminders and up to date information on what's been happening in the world of pastels - and engage with other members far and wide.

Also visit our website at: www.ozpastels.com.au to get detailed information about events, demonstration and workshop schedules, competitions, etc...

Visit our EXPO 2018 website at: www.australianpastelexpo.com.au to get up-to-date information about the upcoming Pastel EXPO.



Pastel Expo
2018

Registration & Booking Details

4

A graphic for the Pastel Expo 2018 registration and booking details. It features a blue map of Australia with the text 'Pastel Expo 2018' inside. Below the map, there are several pastel sticks in various colors (pink, orange, blue, purple). The text 'Registration & Booking Details' is written in white, and the number '4' is written in white at the bottom.

PSA Christmas Party Photos

11

A graphic for the PSA Christmas Party Photos. It features a photograph of two people, one wearing a Santa hat, looking at a gift. The text 'PSA Christmas Party Photos' is written in white, and the number '11' is written in white at the bottom.

PASTEL Workshops

7 - 8

A graphic for the Pastel Workshops. It features a photograph of a person painting a portrait. The text 'PASTEL Workshops' is written in white, and the numbers '7 - 8' are written in white at the bottom.

We gratefully acknowledge Steven Huang's BCC Ward office -who kindly print and staple our Newsletter (in black and white at no charge – not even for the paper) for members who need a hard copy posted to them.

President's Report

Welcome back to Pastel Newsletters with a new editor, Jeanne Cotter, whom we welcome with open arms and many thanks to Joanne for all your work previously, we wish you luck in your new ventures.

The holiday break has been a very busy time for our hard working committee and especially the EXPO committee.

Friday I was finally able to sit in on my first expo committee meeting and am in awe of the amount of work the committee has done and extend them many thanks.

It is going to be a huge year with the EXPO as well as our usual annual events. I trust you are all as excited as I am about the festive pastel dusting that is whipping up with all the activity and hope you will be on board.

Since New Year we opened an exhibition of Master Pastels work at Gin Gin Courthouse Gallery with eight of our masters participating and ninety one artworks.

It is a beautiful exhibition and has been very well attended even the local school are getting on board by organising excursions to the gallery.

It is hoped that we can top this exhibition in Brisbane this year and do better as there is not the logistics of transporting so far.

Back to the job at hand, we have a heavy schedule and the country members competition is drawing to a close in March.

So happy pasteling to all and if there is any way you can offer assistance we would much appreciate your help, as many hands make light work.

Let us stir up a pastel dust storm like no other.
Cheers

Sue

Suzanne Robinson
President PSA Inc.



Table of Contents

President's Report	2
Noticeboard	3
Demonstration Schedule	5
Workshop Schedule for 2018	6
Workshop Schedule	7 - 8
Workshop Reports	9 - 10
PSA CHRISTMAS PARTY 2017	11
Notice of Competitions	13
Advertisements	14
Member Profile	16
Committee Members	17
Submissions to the Newsletter	22
Thanks to our Sponsors	22



**Don't forget to register
from 9am on Thursday
22nd February 2018**

Visit the website before then and have a look at the list of Tutors and the Schedule of Workshops and Demonstrations.

*For all the details visit
<https://www.australianpastelexpo.com.au/>*



Join us on Facebook!

We now have an Australian Pastel Expo Facebook Group where you can keep up to date with Expo news, bios of Tutors and join the conversation!

Log into your Facebook account and search for **Australian Pastel Expo Group**, ask to join and then you'll be in with all the news and updates!

PSA Demo Videos now available online!

Now you can watch some of our very own Demo Videos! When you open the web page there'll be a page that says 'Private'. Just enter the password **Woombye** and you'll go to the next page where there are a few videos of Penelope Gilbert Ng and Louise Corke doing demonstrations.

What a wonderful way to see some of our Master Pastellists in action!



Go to <https://vimeo.com/album/4967161> Password: Woombye

Australia's Inaugural
Pastel Exposition 2018

Hosted by the Pastel Society of Australia

September 13th - 16th 2018

Caloundra Events Centre
Sunshine Coast
Australia



Australia's first pastel convention, the 'Pastel Expo 2018', is underway!

A fun-filled 4-Day Expo including pastel workshops, demonstrations, lectures, trade stalls, paint-outs, plein air sessions, Master Pastellist Exhibition, and so much more will be on offer all under one roof.

On registration day have your preferred events marked out or written down so that you can register your name. There are limited seats for workshops and demos so be sure to get in early with your preferences.

We've attached the Schedule at the end of this newsletter for you select from.

**Registration for PSA Members
is open from 9am on
Thursday 22nd February 2018**

...so make sure you visit the website before then and have a look at the list of Tutors as well as the Schedule of Workshops and Demonstrations.

Visit <https://www.australianpastelexpo.com.au/>

Demonstration Schedule

Entry: Members \$5, non-members \$10

**Brisbane - Mt Gravatt Showgrounds,
Community Hall (upstairs), 1644 Logan Rd, Mt Gravatt**

Coordinator: Margaret Van Maanen, 0423117730

DATE	TUTOR	THEME
Feb, 2018	Tricia Reust	TBA
March, 2018	Tricia Taylor	TBA
April, 2018	Anne Yang	TBA
May, 2018	Joan Macnaught	TBA
June, 2018	Chris Clark	TBA
July, 2018	Margaret Turner	TBA
August, 2018	Chris Blake	TBA
September, 2018	Karol Oakley	TBA
October, 2018	Carol Rix	TBA
November, 2018		Framing

**Gold Coast - First Saturday of each month upstairs at RQAS, 25 Broadbeach Blvd,
Broadbeach**

Coordinator: Louise Corke, lou2345@bigpond.net.au

DATE	TUTOR	THEME
3 Feb, 2018	Penelope Gilbert-NG	The Self Portrait
3 March, 2018	Karol Oakley	Waterscapes
Easter Break		
5 May, 2018	TBA	
2 June, 2018	TBA	
7 July, 2018	Tricia Reust	Contemporary Portrait
4 August, 2018	Anne Yang	Still Life in Bold Colour
1 September, 2018	Christopher Blake	Village Scenes
6 October, 2018	Joan Macnaught	TBC
3 November, 2018	TBA	

**Sunshine Coast - Third Wednesday of each month at Woombye School of Arts, 1-3 Hill
Street,**

Woombye. Coordinator: Kay Weber, keyweber@bigpond.com.au

TBA

Workshop Schedule for 2018

BRISBANE

Coordinator: Lynette Ansari - artiste1@bigpond.com

CODE	DATE	TUTOR	THEME	VENUE
B0518	19 & 20 May 2018	Tricia Taylor	Rocky Coastlines. Use water colour underpainting	Queen Alexandra Home, 347 Old Cleveland Road Coorparoo
B01018	20 & 21 October 2018	Karol Oakley	Plein-air painting with the best of both worlds: Half day out and a half day in the studio. 1. Waterscapes: water in the landscape 2. Planning a painting for those who want success	Queen Alexandra Home, 347 Old Cleveland Road Coorparoo

GOLD COAST

Coordinator: Louise Corke, lou2345@bigpond.net.au

CODE	DATE	TUTOR	THEME	VENUE
GO318	4 March 2018	Karol Oakley	Waterscapes	Wisteria Cottage Mt Tambourine
G118	4 November 2018	TBA		Wisteria Cottage Mt Tambourine

SUNSHINE COAST

Coordinator: Pat Pennell, kppannell@bigpond.com

CODE	DATE	TUTOR	THEME	VENUE
S0318	17 & 18 March 2018	Penelope Gilbert Ng	Portraits	Chancellor State School
S0718	July 2018	Margaret Turner	Rocky Coastlines.	Chancellor State School

Pastel Portraits

Penelope Gilbert-Ng

2 day Workshop

Chancellor Park State High School

Sunshine Coast

What You Will Learn

Students will be working from their own photos of head shoulders of subject no flash photography as this flattens form. Look for a light source when setting up the model for posing. Their own images makes for a better portrait. No magazine images please.

First day working on a child's portrait on Strathmore toned paper. Second day working on an adult portrait on white Colourfix paper with watercolour underpainting. Penelope will demonstrate to start with, explaining measuring of shapes and proportions. Students will receive notes on the measuring of heads etc.

Penelope recommends using an iPad for looking at the image, as it can be enlarged if needed to see detail at end. Photocopy enlargements distort colour and tone.



About Penelope.

Penelope believes that continual learning is essential for self-development as an artist. She is Past President of Pastel Society of Australia and Master Pastellist with the Pastel Society of Australia, Past President and Fellow of the Royal Qld Art Society and sought after tutor with Art Societies and Groups nationally in all mediums. Penelope has been a finalist in the Archibald and Portia Geach Portrait Prizes and has had numerous solo and joint exhibitions.

Her commissioned paintings are represented in corporate / private collections worldwide. Winning many competitions and combining knowledge and dedication to her art has enabled her to judge shows since 2002. Penelope has written 7 articles for The Australian Artist Magazine

Details:

Chancellor Park State High School, Sunshine Coast

From 8:30 setup, 9:00 start to 4:00pm

Cost for 2 day workshop is \$140 for PSA members (\$180 non-members).

Materials list available on website.

To book S0318 workshop go to

<http://ozpastels.com.au/events/category/workshops/workshops-sunshine-coast/>

More details contact Pat 0447 971 369 or Sally 0403017832

Waterscapes

Karol Oakley 1day Workshop

Wisteria Cottage Mt Tambourine

Sun 4th March 2018

What you will learn

The day is “All about Pastels” when we go through a series of painting “Waterscapes” as small studies using only soft pastels. The exercises are quick, fun and surprisingly helpful for your future pastel painting adventures.

Participants will each be given a reference to create a painting from, in their own style, of a Waterscape that includes a seascape, reflections and running water. Of course, there will be rocks and sand and skies and trees, so a bit of everything else as well. Each exercise is demonstrated and discussed so everyone can look, ask questions and create Waterscapes in a traditional and relaxed way. Materials list on the website.



About your Tutor

Karol Oakley is a very experienced tutor, who generously shares what she knows and loves about pastels and painting. Her workshops are structured to help those new to pastels or wanting to further develop their skills and confidence.

Karol's workshops are informative and fun, with the often heard comment of “Oh I learnt so much”. Tutoring is with step by step demonstration, explanations, and discussion with equal time individual help.

Karol Oakley is a Master Pastellist of the Pastel Society of Australia Inc. and the Pastellist of the Year 2014/15. There are pastel features and articles in Australian Artist magazine of Karol's paintings.

Details:

At Wisteria Cottage, 95-97 Main Western Road, Mt Tambourine

From 8:30 setup, 9:00 start to 4:00pm. Cost \$70 for PSA members (\$90 non-members)

To book G0318 workshop go to <http://ozpastels.com.au/events/category/workshops/workshops-gold-coast/>

More details contact Geoff May....0412 379 682 gbmay01@gmail.com

Workshop Reports

PSA Brisbane workshop 'Portraits - Edges'
November 18 – 19, 2017, MP Louise Corke.
Written by Margaret Ollerenshaw

The aim of this two-day workshop was to learn more about how to work with Edges, particularly when painting Portraits. The workshop was to cover edge definition, types of edges, samples of edges, and look at edges in a variety of subject matter and paintings.

On day one, we enjoyed three activities, looking at different types of edges and completing some basic tasks that would facilitate the portrait activity to come on day two.

As preparation for the workshop, Louise had asked us to bring in paint swatches in a variety of tones of greys, that fell between black and white.

We cut these swatches up into small pieces and put numbers on the backs of the swatches, from 1 to 8. We developed a tonal scale by first placing a white swatch with a black swatch, making a hard edge. We then worked down the scale, using our grey pieces, in contrast to the black, to develop hard edges, intermediate edges and soft edges. The swatches with the softest edge were closest in tone.

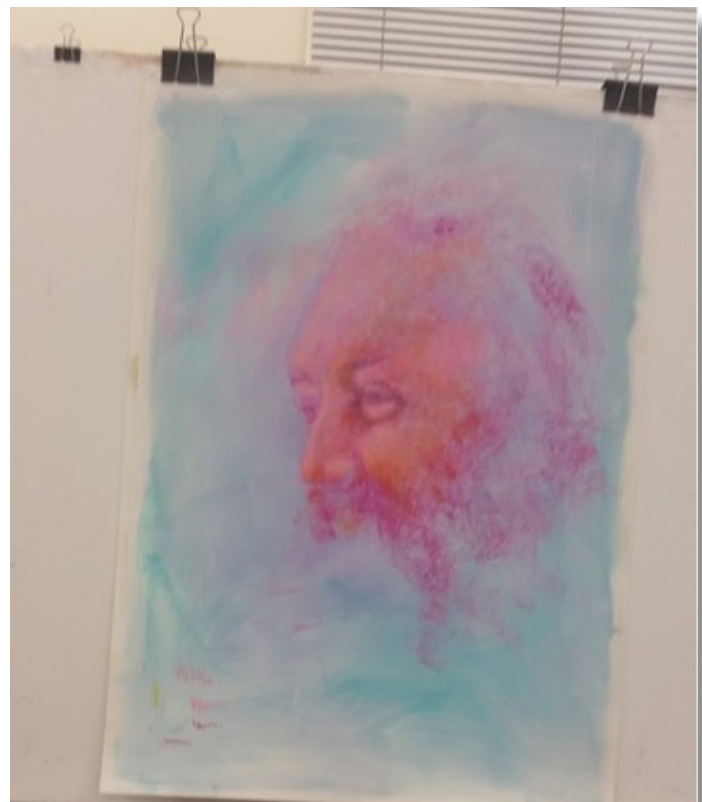
The second activity that also examined types of edges used photos. We had brought in photos, such as a landscape with some grasses or trees, or photos which showed similar objects overlapping e.g. two people, two pieces of fruit. I had photos of fruit, two lemons that overlapped one other.

Louise then asked us to paint the subject of one of our photos, for example, painting two lemons next to one another, one showing a hard edge and one with a soft edge. We completed a number of painting examples showing hard edges, soft edges, lost edges, intermediate edges etc. We did this using various techniques including curves versus angles, stitching, feathering, blending, wetting, applying different pressure – line and thickness; tonal contrast, textural variation, colour hue- intensity- temperature variation, broken lines, broken colour and intermediate colours- tones.

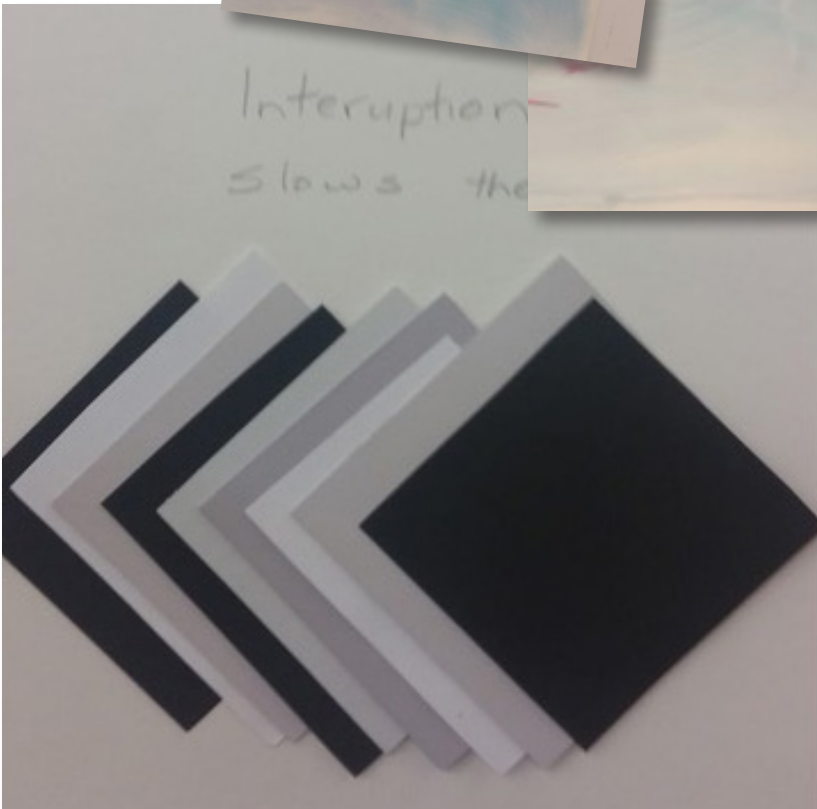
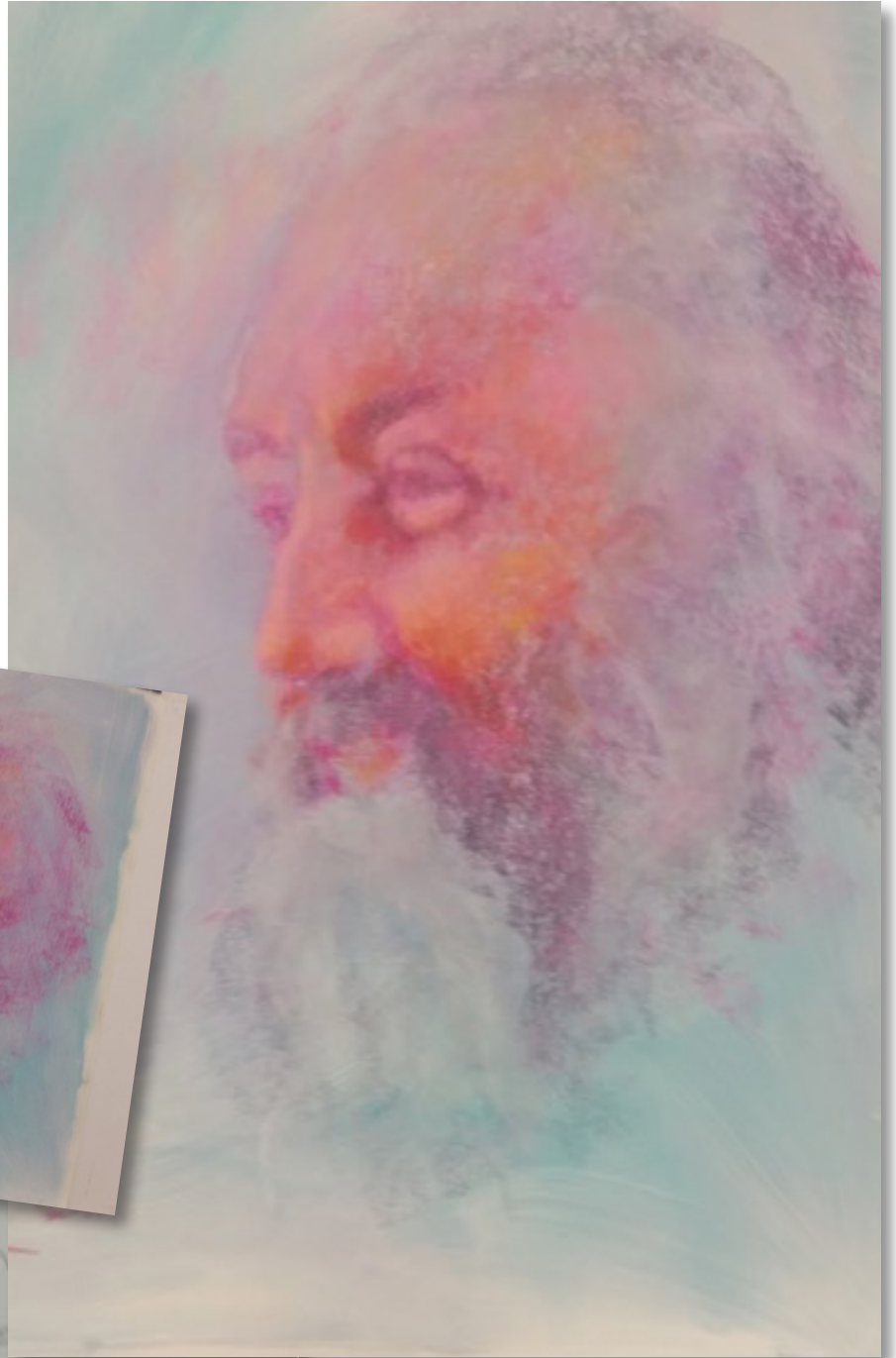
Some of these techniques can control and or slow the viewer.

The third and last activity for Day One used a portrait we had painted previously and brought in especially for the workshop. Louise circulated around the group, and examined each person's portrait painting, discussing the most effective ways to work with edges and to improve their portrait.

A discussion of the effective use of edges in portraits has been previously presented very effectively in a detailed report of one of Louise's demonstrations, 'Living on the Edge: Edges Demonstration', presented in the 'The Pastellist', October 2017, Vol. 33, No. 4.



Workshop Reports



PSA CHRISTMAS PARTY 2017

Early in December, members gathered at the Community Hall at Mt Gravatt Showgrounds, bringing paintings to swap, gifts for children in Foster Care and lots of yummy food to share. We thank Hettie Rowley for her organisation, with help from Gail Lusted and other members.



Burman as our cheery MC.

Participation Awards are for members who brought a painting to all ordinary meetings for 2017, to share what they are working on with other members. For General Members, the awards were presented to Gail Lusted, Calvin Rose, Mavis Rose and Hettie Rowley. For Master Pastellists, first place went to Louise Corke, and second place to Penelope Gilbert-Ng.

When the paintings are displayed at ordinary meetings, attending members vote on both their favourite General Member painting, and Master Pastellist painting. The General Members Choice Award for the General Member who accumulated the most votes over the year was -Winner Hettie Rowley, Runner up Gail Lusted.

Master Pastellists Choice Award - Winner Penelope Gilbert-Ng Runner up Louise Corke.

PSA Inc makes two awards in memory of former members:

The John Thiesfield New Member Encouragement Award is donated by Gwen Thiesfield in memory of her husband John, a former President of the Society, because encouraging new artists was dear to his heart. This year the winner was Henry Leung.

The John Jeffery Award is presented for outstanding service and contribution to the PSA, and is made in honour of one of the founders of the Society. This year the membership voted to present this award to our President Sue Robinson. Many may not realise that Sue lives at Gin Gin and travels 5 hours both ways for meetings. Sue has been a Country Member for over 20 years and has promoted Soft Pastels far

and wide. In 2017, as PSA President, she attended the International Association of Pastel Societies Conference in the USA.

At the time of the Annual Exhibition, the Pastellist of the Year shield had not been returned. It was a fitting occasion to present the perpetual trophy to Louise Corke.

PRESENTATION OF AWARDS

Members mingled and socialised and enjoyed catching up.

Awards were presented by our President Sue Robinson, with Kelcey

FUN AND GAMES

Kelcey Burman continued to entertain us with her organisation of the other activities. The team games were well chosen as they gave no advantage to anyone who is an artist, and this added to the fun.

Drawing a reindeer

Following step by step instructions, we drew a reindeer on paper plates above our heads. Teams chose their representatives for the short list- Joan Macnaught, Penelope Gilbert-Ng, Louise Corke and Gwen Thiesfield. The audience voted to award the prize to non-artist Gwen.

Unwrap the parcel

Each box had been wrapped in many layers of paper. Within each team, people who threw a 6 on the dice could have the next turn to try to unwrap the parcel. BUT ... the "unwrapper" had to put on a Santa hat, and oven gloves before their attempt, with the constant time pressure that the next person might throw the magic.

Painting swap

Each person contributed a painting to specified dimensions, but of any subject. The works were displayed for all to see and admire during the evening. With great anticipation, the participants' names were drawn from a hat, and the next painting in order became theirs to take home.

GIFTS DONATED

People who generously open their homes and families to children, who need foster care, find it difficult at Christmas to stretch the budget for the additional household members.

Members were asked to donate gifts, unwrapped so they could be allocated appropriately to children in care. Foster Care Queensland thanked our members for their generosity. They were so delighted by the variety of gifts that were thoughtfully chosen and donated, particularly for older children.

PTO for photos>>>



Notice of Competitions

APRIL: "Happy Days"

Open to General Members Only. The theme is 'Happy Days' so it's time to start working on a pastel painting that depicts happiness and brings a smile to your face.

First prize of \$100 for Brisbane, Sunshine Coast and Gold Coast. The competition will be held at these locations at the normal meeting times.

Rural members are welcome to enter but it will be your responsibility to bring your painting along to the nearest meeting on the day.

Judging is done by attendees and their votes.

Your painting must be presented nicely behind a mat board, it doesn't have to be framed but you may if you wish.

SEPTEMBER: TBA

The September Competition has been postponed due to the Pastel Expo, so we will run it in October. Stay tuned for details in the next newsletter.

In the meantime, let's get started on the paintings for the April competition now!

COUNTRY ONLINE COMPETITION

Due to a few technical reasons we have had to defer last year's Country Online Competition until 30th March 2018.

Categories: General Members and Master Pastellists can submit up to 2 entries each.

To those artists who have already submitted their entries into last October's Competition - thank you! Your entries will automatically go through to the March Competition and you have another fantastic opportunity to submit one more. What a win win!

We are keeping the competition open to receive entries from now til the deadline of 30th March 2018.

Remember for submission purposes you don't have to have your painting framed.

Prize Money: Prize money is \$300 for 1st, \$200 for 2nd and \$100 for 3rd in both Categories. Free choice of subject.

How to Enter: We've realised that several people have had trouble loading their entries online so there are two other options.

1. You may use the form on the web to enter (please make sure you are logged in first) and use this link: <http://ozpastels.com.au/country-members-online-competition-2017/>
2. You can email your entries to competitions@ozpastels.com.au

If you choose the email option please include the following information:

- *Your full name and address*
- *Are you a General Member or a Master Pastellist*
- *The title of your painting*
- *Size of Painting*
- *Attach a photo of your painting.*

Closing Date: 30th March 2018

However you decide to enter, just make sure you do because you can't win it if you're not in it!

If you have any difficulties please email Hettie on competitions@ozpastels.com.au or call her on 04106 180 121

*You're considered a **Country Member** if you do not fall into the Brisbane, Gold Coast or Sunshine Coast Regions for attending meetings. If you have to stay overnight you are considered Country. We welcome our interstate and New Zealand members to enter the competition.*

ANNUAL COMPETITION - 12TH JULY TO 15TH JULY

All sections can be Traditional or Contemporary in style

Section 1 - Scapes - Land, Sea and Street

Section 2 - Portraiture and Figures

Section 3 - Still Life

ALEXANDRA AWARD

Two entries are permitted to members who have never won 1st prize in a Pastel Painting Competition

More details are coming soon!

Soft pastels.com.au

SOFT PASTEL EXPERTS

The largest range of soft pastels and specialty pastel papers in Australia.

Pastels

- Art Spectrum
- Blue Earth
- Conte
- Generals
- Girault
- Holbein
- NuPastel
- Pan Pastels
- Rembrandt
- Schmincke
- Sennelier
- Unison

Papers

- Ampersand Pastel Board
- Colourfix
- Colourfix Smooth
- Fisher 400
- Hahnamuhle Velour
- Hahnamuhle Pastelfix
- Mi-Teintes
- Mi-Teintes TEX
- Pastelmat
- Sennelier Pastel Card
- Sennelier Velvet and Felt
- UART Premium

- ▶ We deliver Australia wide as well as internationally.
- ▶ We provide value pricing everyday and run monthly specials.
- ▶ We are a unique family run business with friendly service and help.
- ▶ Our range only consists of artist quality materials. New items are constantly sourced.

www.softpastels.com.au

OPENING HOURS

Monday - Friday 6:00am to 6:00pm
Saturday 6:00am to 2:00pm

259 Bruncker Road, Adamstown NSW 2289

Phone: **02 4957 1050**

Email: colours@softpastels.com.au

Final Reminder!

Pastel
Expo
2018

Don't forget to register
from 9am on Thursday
22nd February 2018

Visit the website before then and have a
look at the list of Tutors and the Schedule
of Workshops and Demonstrations.

For all the details visit
<https://www.australianpastelexpo.com.au/>

EXPO 2018 Registration Prize

Many thanks to our wonderful sponsors for donating such an awesome prize valued at \$735.



2 x Large Pastelmat Pads

1 x Blue Earth Set of 28

Pack of 10 Uart Paper

1 x Giralt Set of 50



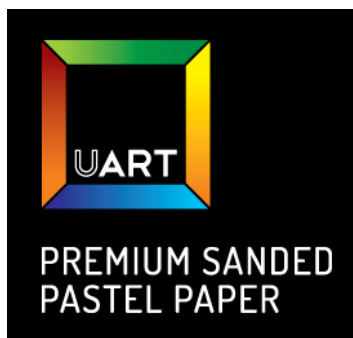
Winner must be present at the Expo to win.

Registration opens

for members on 22nd February at 9am

Non members on 24th February at 9am.

www.Australianpastelexpo.com.au



Blue Earth Pastels

Organized by Hue, Value and Intensity



Tricia Coombe

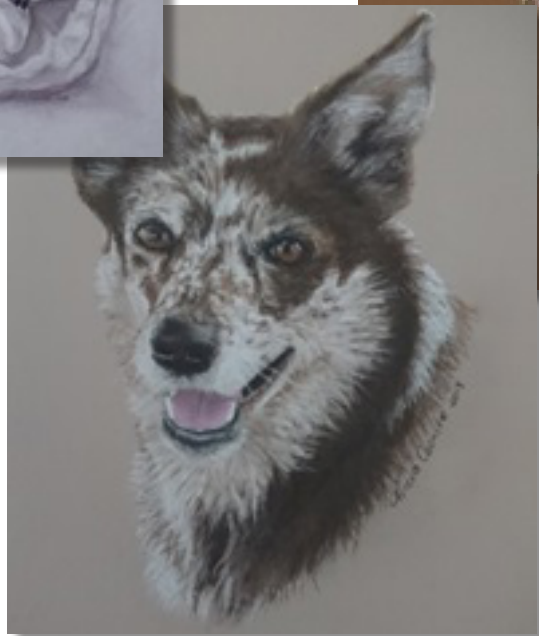


My name is Tricia and I live in the beautiful South Burnett Qld.

I have always loved art and at various times in my life dabbled in drawing and painting when time permitted. It wasn't until 2014 that I discovered soft pastels and from that point on, my art focus has been guided towards producing paintings of our much loved pets that make our families all the richer. Being able to offer a visual reflection of a special fur friend can be both emotional and very rewarding and I think that drives my passion for this type of artwork.

I look back from when I started and laugh at the pastels I brought with me to the first workshop I attended. I really had no idea but I have persevered, had loads of support and learnt so much. I'm at the start of my art journey and I still have so much more to learn and grow.

I thank Karol Oakley for the love I have for the medium and Maxine Thompson for the inspiration and emotion that comes with painting pets.



Committee Members

President

Suzanne Robinson 0429789266
PresidentOzpastels@gmail.com

Secretary

Kelcey Burman
SecretaryOzpastels@gmail.com
personal: kelcey@optusnet.com.au

Treasurer

Vanessa Thomas
treasurerozpastels@gmail.com

Vice President

Geoff May
0412379682,
VicePresidentOzpastels@gmail.com

Committee Member

Terry Wilkinson
07 32076134
terrywilkinson@bigpond.com

Committee Member

Greg Steele 07 32617972
gregorymarj57@outlook.com

Sub-committees

Public Officer
Gillian Collom
PublicOfficerOzpastels@gmail.com

Exhibition Coordinator

Hettie Rowley
competitions.psa@gmail.com

Membership Secretary

Vanessa Thomas
treasurerozpastels@gmail.com

Webmaster

Margaret Turner 07 3300 5340
webmaster@ozpastels.com.au

Webmaster Assistant - Vacant

Communications and Advertising

Laurel Donaldson
commsozpastels@gmail.com

Promotion Officer - Vacant

Newsletter Editor & Design

Jeanne Cotter
jeannecotterbrisbane@gmail.com
0413 374 634

Newsletter Team

(postal/mail out)
Margaret Ollerenshaw
0435413726

Library

Greg Steele
07 32617972
gregorymarj57@outlook.com

Competition Coordinator

Hettie Rowley
0406180121
competitions.psa@gmail.com

Workshop Coordinator

Brisbane: Lynette Ansari
artiste1@bigpond.com
0400554956

Gold Coast: Louise Corke
0419644665,
lou2345@bigpond.net.au

Sunshine Coast: Pat Pennell
0447971369, kppennell@bigpond.com

Master Pastellist Submissions

Penelope Gilbert-Ng
0403882079
p_gilbertng@optusnet.com.au

BVAC Liaison Officer - Vacant

Expo Coordinator

Kelcey Burman
Pastelexpo@gmail.com
Expo team: Tricia Taylor, Betty Sutton, Penelope Gilbert-Ng, Karol Oakley, Louise Corke, Joanne Cotton, Vanessa Thomas

Expo Event Volunteer Coordinator

Betty Sutton
betty.sutton@bigpond.com
0417672771

Meeting Support Team

Margaret Ollerenshaw & Gwen Thiesfield

Meeting Demonstration Coordinator

Brisbane: Margaret Van Maanen
0423117730
Gold Coast: Louise Corke
0419644665
Sunshine Coast: Sally Thomson
0403017832

Meeting Reception

Terry Wilkinson 0419799286
Assistant
Gail Lusted 0422217582



AUSTRALIAN PASTEL EXPO 2018 Hosted by Pastel Society of Australia Inc.
australianpastelexpo.com.au pastelexpo@gmail.com

Wednesday 12th September Registration opens after 3:30pm in the afternoon with a welcome address and drinks from 5:00pm to 6:30pm to celebrate the official opening of the Expo. A social time to come and meet with the other students and tutors and see our tutors exhibition.

Thursday 13th September 2018

Tutor	Workshop/Demo	Code	Date	Time	Theme
Leoni Duff	Workshop	WT1	Thursday 13th	9am-4pm	Still Life: Style Story and Technique of the Masters
Liz Hayward Sullivan	Workshop	WT2	Thursday 13th	9am-4pm	Creating Powerful Seascapes
Lyn Diefenbach	Workshop	WT3	Thursday 13th	9am-4pm	Portrait of the Floral
Maxine Thompson	Workshop	WT4	Thursday 13th	9am-4pm	Animals a Character Study
Pauline Adair	Workshop	WT5	Thursday 13th	9am-4pm	Figure Studies in Charcoal and Pastel
Penelope Gilbert Ng	Workshop	WT6	Thursday 13th	9am-4pm	Children at Play Tell your own story
Ross Paterson	Workshop	WT7	Thursday 13th	9am-4pm	Landscape with Animals
Betty Sutton	1/2 day Workshop	WT8A	Thursday 13th	9am-12noon	Discovering the delights of Pastel
Joan Macnaught	1/2 day Workshop	WT8B	Thursday 13th	1pm-4pm	Make the Paper work for you in Florals
					No plein air morning session today
Karol Oakley	1/2 day Workshop	WT9B	Thursday 13th	1pm-4pm	Plein Air - Boardwalk Caloundra
Christine Clark	demo	DTA1	Thursday 13th	9am-10:30am	Seascape Energy and mood
Chris Blake	demo	DTB1	Thursday 13th	9am-10:30am	Putting Life into the Town Scope
Karol Oakley	demo	DTC1	Thursday 13th	9am-10:30am	Plein Air Painting Explained
Christine Clark	demo	DTA2	Thursday 13th	11am-12:30am	Still Water
Chris Blake	demo	DTB2	Thursday 13th	11am-12:30am	Equine Madness
Sandra Temple	demo	DTC2	Thursday 13th	11am-12:30am	Animals
Betty Sutton	demo	DTA3	Thursday 13th	2pm-3:30pm	Tips and Techniques learn to paint with pastel
Hettie Rowley	demo	DTB3	Thursday 13th	2pm-3:30pm	Realistic hair and fur on Animals
Anne Yang	demo	DTC3	Thursday 13th	2pm-3:30pm	Painting Still Water

This schedule is accurate at time of printing but subject to last minute changes as we are still a long way. If classes do not fill we reserve the right to cancel. Early Evening events 5pm- 6:30pm will be announced closer to the Expo and will be available for all to attend. Eg paint arounds. Q&A sessions etc.



AUSTRALIAN PASTEL EXPO 2018 Hosted by Pastel Society of Australia Inc.
 australianpastelexpo.com.au pastelexpo@gmail.com



Friday 14th September 2018

Tutor	Workshop/Demo	Code	Date	Time	Theme
Max Wilks	Workshop	WF1	Friday 14th	9am-4pm	Landscapes
Karol Oakley	Workshop	WF2	Friday 14th	9am-4pm	Landscapes with Water
Leoni Duff	Workshop	WF3	Friday 14th	9am-4pm	Figures Seeing Beauty Gesture and Design in Painting the Costumed Figure from Life.
Liz Hayward Sullivan	Workshop	WF4	Friday 14th	9am-4pm	Capturing the Natural Landscape
Lyn Diefenbach	Workshop	WF5	Friday 14th	9am-4pm	Portraits – Building the Illusion of Reality
Lyn Mellady	Workshop	WF6	Friday 14th	9am-4pm	Waves, Rocks and Shoreline Impressionist Realism
Maxine Thompson	Workshop	WF7	Friday 14th	9am-4pm	Landscape What to Leave Out
David Newman White	Workshop	WF8	Friday 14th	9am-4pm	TBA
Tricia Taylor	1/2 day Workshop	WF9A	Friday 14th	9am-12noon	plein Air - Capturing the Ocean Plain air
Ross Paterson	1/2 day Workshop	WF9B	Friday 14th	1pm-4pm	Plein air - Urban Landscape
Hettie Rowley	demo	DFA1	Friday 14th	9am-10:30am	Portrait using Wax Ink and Pastel
Louise Corke	demo	DFB1	Friday 14th	9am-10:30am	Technical Creating Custom Alternate Surfaces for Pastel
Louise Corke	demo	DFA2	Friday 14th	11am-12:30am	Technical Moving Water in a Rocky Environment Using a Wet Technique
Sandra Temple	demo	DFB2	Friday 14th	11am-12:30am	Animals
Tricia Reust	demo	DFC2	Friday 14th	11am-12:30am	Pastel On Canvas
Robyn Receveur	demo	DFA3	Friday 14th	2pm-3:30pm	Wildlife
Margaret Turner	demo	DFB3	Friday 14th	2pm-3:30pm	Floral – Beauty and Light
Joan Macnaught	demo	DFC3	Friday 14th	2pm-3:30pm	Country Clobber
Liz Hayward Sullivan	Demo	Main demo	Friday 14th	5pm-6:30	The Dramatic Sky in Pastel

This schedule is accurate at time of printing but subject to last minute changes as we are still a long way. If classes do not fill we reserve the right to cancel. Early Evening events 5pm- 6:30pm will be announced closer to the Expo and will be available for all to attend. Eg paint arrounds. Q& A sessions etc.



AUSTRALIAN PASTEL EXPO 2018 Hosted by Pastel Society of Australia Inc.
 australiapastelexpo.com.au pastelexpo@gmail.com



Saturday 15th September 2018

Tutor	Workshop/Demo	Code	Date	Time	Theme
Christine Clark	Workshop	WS1	Saturday 15th	9am-4pm	Fabulous Figures non model
Leoni Duff	Workshop	WS2	Saturday 15th	9am-4pm	Composing Powerful Figure Paintings from Photographic Reference.
Karol Oakley	Workshop	WS3	Saturday 15th	9am-4pm	Interpretive Pastel Mixed Media
Liz Hayward Sullivan	Workshop	WS4	Saturday 15th	9am-4pm	Working with Architecture in the Landscape
Louise Corke	Workshop	WS5	Saturday 15th	9am-4pm	Portraits Less is More
Penelope Gilbert Ng	Workshop	WS6	Saturday 15th	9am-4pm	Conceptual Abstract
Tricia Taylor	Workshop	WS7	Saturday 15th	9am-4pm	Shorelines - How to Paint a Crashing Wave onto Wet Sand
Anne Yang	Workshop	WS8	Saturday 15th	9am-4pm	Still Waters Run Deep
Lyn Mellady	1/2 day Workshop	WS9A	Saturday 15th	9am-12noon	Plein air See it Love it Do it
Max Wilks	1/2 day Workshop	WS9B	Saturday 15th	1pm-4pm	Plein air
Tricia Reust	demo	DSA3	Saturday 15th	9am-10:30am	Technical How to Use Art Spectrum Primer
Maxine Thompson	demo	DSC1	Saturday 15th	9am-10:30am	Portraits What Were They Thinking?
Maxine Thompson	demo	DSA2	Saturday 15th	11am-12:30am	Animals Character Study Leave Room for Interpretation
Mako Waki	demo	DSB2	Saturday 15th	11am-12:30am	Juxtaposition Fish and Floral
Tricia Reust	demo	DSC2	Saturday 15th	11am-12:30am	Special New Pastel Work Over Old
Pauline Adair	demo	DSB1	Saturday 15th	2pm-3:30pm	The Figure in Pastel
Lyn Mellady	demo	DSB3	Saturday 15th	2pm-3:30pm	Still Water Above and Below, We See it All Impressionist Realism
Ross Paterson	demo	DSC3	Saturday 15th	2pm-3:30pm	Technical Explanation of Colour/Tone in a Landscape

This schedule is accurate at time of printing but subject to last minute changes as we are still a long way. If classes do not fill we reserve the right to cancel. Early Evening events 5pm- 6:30pm will be announced closer to the Expo and will be available for all to attend. Eg paint arrounds. Q&A sessions etc.



AUSTRALIAN PASTEL EXPO 2018 Hosted by Pastel Society of Australia Inc.
australianpastelexpo.com.au pastelexpo@gmail.com

Sunday 16th September 2018

Tutor	Workshop/Demo	Code	Date	Time	Theme
Chris Blake	Workshop	WX1	Sunday 16th	9am-4pm	Marine Reflections Workshop
Christine Clark	Workshop	WX2	Sunday 16th	9am-4pm	Portraiture in Mixed Media Pastel and Charcoal Wet With Metho
Joan Macnaught	Workshop	WX3	Sunday 16th	9am-4pm	Fun with Aussie Flowers
Louise Corke	Workshop	WX4	Sunday 16th	9am-4pm	Still Life Colours That Flow in the Rivers of Light and Shadow
Ross Paterson	Workshop	WX5	Sunday 16th	9am-4pm	Urbanscape
Tricia Reust	Workshop	WX6	Sunday 16th	9am-4pm	Painting and Retrieving Papers for Pastel
Sandra Temple	Workshop	WX7	Sunday 16th	9am-4pm	Animals in Pastel
Karol Oakley	1/2 day Workshop	WX8A	Sunday 16th	9am-12noon	Urban Planning
Tricia Taylor	1/2 day Workshop	WX8B	Sunday 16th	1pm-4pm	Colour mixing - Limiting Your Pallet
Max Wilks	1/2 day Workshop	WX9A	Sunday 16th	9am-12noon	Plein Air
					No Plein air Session this Afternoon
David Newman White	Double demo	DXA1	Sunday 16th	9am-12:30am	Portraits and Figures
Penelope Gilbert Ng	demo	DXB1	Sunday 16th	9am-10:30am	Landscape What is the Story
Tricia Taylor	demo	DXC1	Sunday 16th	9am-10:30am	Oceans Using Watercolour Underpainting
Penelope Gilbert Ng	demo	DXB2	Sunday 16th	11am-12:30am	Portrait Simplify - Less is best
Maxine Thompson	demo	DXC2	Sunday 16th	11am-12:30am	Still Life using Less for Greater Effect
Anne Yang	demo	DXA3	Sunday 16th	2pm-3:30pm	Flower Portrait with Luminosity
Lyn Mellady	demo	DXB3	Sunday 16th	2pm-3:30pm	Seascape Energy Moving in Light Impressionist Realism
Pauline Adair	demo	DXC3	Sunday 16th	2pm-3:30pm	The figure Using Watercolour and Pastel

This schedule is accurate at time of printing but subject to last minute changes as we are still a long way. If classes do not fill we reserve the right to cancel. Early Evening events 5pm- 6:30pm will be announced closer to the Expo and will be available for all to attend. Eg paint arrounds. Q&A sessions etc.

Submissions to the Newsletter

The newsletter will be released bi-monthly. The next newsletter is due out at the beginning APRIL 2018.

CLOSING DATE: Closing Date for April 2018 Newsletter is 10th of March 2018.

Articles submitted AFTER this date WILL NOT BE ACCEPTED. I will be on holidays from 25 March - 4 April and unavailable.

SEND TO: All submissions are to be sent to JEANNE COTTER at jeannecotterbrisbane@gmail.com

FORMAT: The preferred format for written articles is Microsoft Word sent as an attachment to your email. Articles sent from an iPad or in the body of an email are not acceptable. Please send photos as jpg attachments to your email, not embedded in an email, and title each photo with your name and a number (eg: janesmith001.jpg) rather than send as a file number (eg: 2200957694.jpg). Please make ALL reports in text font ARIAL Size 11. Many thanks for your assistance.

YOUR NEWS: Please let us know of your pastel achievements. We want to celebrate with you!! The newsletter is a great way to let people know and to build your profile.

YOU CAN CONTRIBUTE: We'd love to hear about Workshops and Demonstrations that you've attended. Be willing to write up meeting demonstration and workshop reports and send to the Newsletter team ASAP - within a week of the event - (PLEASE not at the last minute). Many thanks.

CLOSING DATE: Closing Date for April 2018 Newsletter is 10th of March 2018.

Thanks to our Sponsors

GWEN THIESFIELD



Barbara Alexandra

