



# THE PASTELLIST

VOL 33 no1  
The Pastel Society  
of Australia Inc.

Established by John and Ivy Jeffrey in 1985

## Presidents Report February 2017



Welcome back to the pastelling fold in this new year of 2017. Wishing cheer to all and trusting you are all ready to move on into our next phase of technology, workshops and demonstrations at meetings. We have our first meeting in the first week of February and blossom back into colour.

During the festive break the committee and website group have remained very busy and actively working at rebuilding the renewed website. It is now back in the hands of our coordinators who will add all the appropriate information for your viewing and use. The site is much more visually interactive and I personally find it a delight to use. An email will follow with helpful hints on how to use the new website.

During the festive break the Master Pastelists mounted their second Joint Exhibition at the Court House Regional Gallery in Gin Gin. This gallery is on Highway 1, the main street of Gin Gin. Passing through Gin Gin anytime stop in and visit the gallery and have a cup of coffee in the Court House coffee shop. The Master Pastellist exhibition was stunning and well attended. Many thanks go to the Master Pastelists for their effort which has contributed to the marketing of the PSA and the Expo in 2018.

A request from the Newsletter team:  
Please observe the deadlines for any information, workshop and demonstration reports and advertising that need to go into the bi-monthly newsletters. This will greatly assist them.

Happy Pastelling, adding colour to your life.

President Sue Robinson

### CONTENT:

1. President's Report
2. Notice Board
3. Demonstration Schedule 2017
4. Workshop Schedule 2017
5. Workshop Notes
7. Goals for 2017
8. Demonstration report Sunshine Coast
- 9 & 10. Upcoming Workshops, Tours and Classes
- 11 - 14. End of Year Party - Brisbane
15. Artable Workshops
16. Country Members Online Competition Winners
17. Southern France with Tricia Taylor
- 18 - 20. Advertisers
22. Online competition entry rules

### NOTICE BOARD

The New Website development is finished and we are now loading event information, artist profiles and other information into the site. Please have a look and tell us what you think.

PSA members responded generously and donated gifts at our End of Year Party. The Certificate below shows Foster Care Queensland appreciation.

SET SUBJECT FOR APRIL MEETINGS  
BRISBANE  
GOLD COAST AND  
SUNSHINE COAST  
  
**“SHOW STOPPER”**  
  
GET PAINTING NOW!



**EXPO - 2018**  
We are planning the Pastel event of a lifetime - a full on Pastel Expo in Australia in 2018 and would like to have your input. To that end we have created a survey form which we would like you to fill in, telling us your expectations. Please go to this link:  
<http://ozpastels.com.au/2018-pastel-expo-survey/>

**ALL MEMBERS  
ONLINE  
COMPETITION  
ENTRIES:  
  
OPEN 3 MARCH  
CLOSE 31 MARCH**

The entries for the Country Members Online Competition 2016 have been posted and can be viewed on the website

**Exciting News - Barbara Alexandra Award - July 2017**  
**Criteria - Limited to Members who have never won a FIRST PRIZE**  
**Two Sections - 1. Favourite Thing/s - Prizes: 1st \$600 2nd \$200 3rd \$100**  
**2. Working Day -- Prizes: 1st \$600 2nd \$200 3rd \$100**  
**Conditions of entry**  
**A Member may enter 1 painting in each section (2 paintings)**  
**An entry into the General Members Section of the Annual Award is permitted.**  
**(maximum 3 paintings for the Exhibition)**

## 2017 Demonstrations

Please check PSA website [www.ozpastels.com.au](http://www.ozpastels.com.au) for updates

<b>Brisbane Demonstrations</b>		
<b>Meeting</b>	<b>Theme</b>	<b>Presenter</b>
7 February	Portraits on Ampersand	Penelope Gilbert Ng
7 March	Master Pastellists Q&A	Various MP's TBA
4 April	Using Gold Leaf	Tricia Taylor

INFO – Hettie Rowley  
Mob: 0406180121

Email:  
[hettie@magickmirrors.com](mailto:hettie@magickmirrors.com)



Demonstrations are held during the PSA Brisbane General Meetings  
1st Tuesday of each month at 7:00pm

Venue: Mt Gravatt Showgrounds -  
Community Hall (upstairs)  
1644 Logan Rd, Mt Gravatt.  
Entry: Members \$5, including refreshments.  
Non-member \$10

<b>Gold Coast Demonstrations</b>		
04 February	Flowers - the Wattle	Margaret Turner
04 March	Photographing Still Life	Carol Rix
01 April	Composition	Tricia Taylor

INFO – Louise Corke  
Mob: 0419 644 665

Email:  
[lou2345@bigpond.net.au](mailto:lou2345@bigpond.net.au)



First Saturday of each month 1-3pm

Venue: Upstairs at RQAS  
25 Broadbeach Blvd  
Broadbeach, Gold Coast

Entry: Members \$5. Non-members \$10

<b>Sunshine Coast Demonstrations</b>		
15 February	Flowers	Margaret Turner
15 March	Reflections on moving water	Chris Blake
19 April	Photography	Carol Rix

INFO – Sally Thomson  
Mob: 0403 017 832

Email:  
[sally@sallythomson.com](mailto:sally@sallythomson.com)



Third Wednesday of each month at 6:30 pm

Venue: Woombye School of Arts,  
1 – 3 Hill Street, Woombye

Entry: Members \$5. Non-members \$10

**WORKSHOP SCHEDULE FOR 2017****B = BRISBANE    D = DARWIN    G = GOLD COAST    S = SUNSHINE COAST**

CODE	DATE	TUTOR	THEME	VENUE
B0317	18 and 19 March	Lyn Diefenbach	Portraits	Queen Alexandra Home, 347 Old Cleveland Rd, Coorparoo
G0317	Tues 21 & Wed 22 Mar	Lyn Diefenbach	Floral	Wisteria Cottage Mt Tamborine
S0317	25 & 26 March	Lyn Diefenbach	Floral	Chancellor Park State High School
S0417	22 & 23 April	Chris Blake	Movement and reflections in water	Chancellor Park State High School
B0517	20 and 21 May	Tricia Taylor	Painting still life metal surfaces - using gold and silver foils	Queen Alexandra Home, 347 Old Cleveland Rd, Coorparoo
D0517A	20 and 21 May 2017	Christine Clark	Drawing	Darwin Visual Arts Assoc.
D0517B	27 and 28 May 2017	Christine Clark	Pastel Portraits	Darwin Visual Arts Assoc.
S0717	29 & 30 July	Karol Oakley	The art of creating paintings from photos	Chancellor Park State High School
B0817	19 & 20 August	Chris Blake	Urban Landscapes	Queen Alexandra Home, 347 Old Cleveland Rd, Coorparoo
B0917	16 & 17 Sept	Diane Rappisi	Portraits or Figures - To be advised	Queen Alexandra Home, 347 Old Cleveland Rd, Coorparoo
S0917	23 & 24 Sept	Diane Rappisi	Figures or Portraits - To be advised	Chancellor Park State High School
G0917	Tues 26 & Wed 27 September	Diane Rappisi	Figures or Portraits - To be advised	TBA
D0917	30 September and 1 October 2017	Diane Rappisi	Figures or Portraits – to be advised	Darwin Visual Arts Assoc.
S1017	21 & 22 Oct	Christine Clark	Make your work more impressionistic	Chancellor Park State High School

## WORKSHOP NOTES:

1. Due to the sequential instruction, attendance for both days is required.
2. Members may attend any venue. That is, for example, Brisbane members are not restricted to attending only workshops based in Brisbane.
3. Workshops are open to members and non-members. Payment secures your place.
4. Cancellation of a booking more than 2 weeks prior to a Workshop - a \$20 Administration fee will be incurred.
5. Cancellation of a booking less than 2 weeks prior to a Workshop - the payment will be forfeited.
6. Extenuating circumstances will be considered by the committee before a full or part refund is given.

## MAKING A WORKSHOP BOOKING

1. Open PSA web site---[www.ozpastels.com.au](http://www.ozpastels.com.au)
  - Go to EDUCATION--- drop down to workshops
  - Scroll down to Workshop List
  - Hover over your choice---writing turns pink to show link is active. Double click.
  - Download and print the material list--- on right
  - Book on line--- left of screen
  - Attendee type--- choose an option-- i.e. PSA Member
  - Click-- ADD to CART
  - VIEW CART--- upper right-hand corner
  - Proceed to Checkout (or Cancel with red cross on left)
  - Fill in billing details
  - Indicate--- Direct Transfer or Cheque payment
  - PLACE ORDER
  - CHECKOUT PAGE--- see Order No. (suggest print out page)
  - Use Order no. as Reference when doing Bank Transfer
  - Your booking is ONLY CONFIRMED when PAYMENT is received.
  - This is only a booking form. Payment is then made by you separately-- Bank Transfer or Cheque or Cash at a General Meeting together with your Order No.

Should Workshop attendee numbers be limited, the first to pay will secure a place. If you have any difficulties booking on line or by email, phone the Treasurer, who is willing to sort out hassles.

An Expressions of Interest in a workshop (prior to actually booking) may be sent to Geoff May [gbmay01@gmail.com](mailto:gbmay01@gmail.com) together with your name, workshop choice and phone number.

### **NEWS from the SUNSHINE COAST GROUP.**

**Previously only the Brisbane Members brought in painting each month to be enjoyed and voted on by the members present. The Sunshine Coast Group are now following suit.**

<b>The GM Participation Award went to ---</b>	<b>Sally Thomson</b>
<b>The MP Participation Award went to ---</b>	<b>Chris Blake</b>
<b>The GM Members Choice Award went to ---</b>	<b>Sally Thomson</b>
<b>The MP Members Choice Award went to ---</b>	<b>Karol Oakley</b>

## ORIGINS OF THE PSA

The Society was established by John and Ivy Jeffery in 1985 and currently we have members in most States and the Northern and Capital Territories and also England.

While the Brisbane, Gold Coast and Sunshine Coast localities offer regular meetings, workshops and demonstrations, **country members** have their own competition and enjoy the other benefits of membership such as:  
The newsletter (including detailed coverage of demonstrations and workshops).

Members-only log in of the web site, and Master Pastellist critiques.

## PSA SPONSORS

Please support these sponsors who support the PSA!

- Softpastels.com.au
- Paul Oxlade: Oxlades  
[paul@oxlades.com.au](mailto:paul@oxlades.com.au)
- Pam Grabbe: Oxlades and Art Spectrum  
[pam@oxlades.com.au](mailto:pam@oxlades.com.au)
- Kevan and Anne Buckle: Arthouse Northside  
[arthousenorthside@gmail.com](mailto:arthousenorthside@gmail.com)

This list is not conclusive but lists some of the businesses that support Pastel Society members. Please consider giving them your business.

## PSA Members Billet List

With the reduction in the number of workshops, there may be a desire to travel to another centre to attend your chosen Tutor and Topic.

When it is a 2 day workshop, the extra travel may deter you as you can be very tired, and overnight accommodation could make the weekend too expensive.

I am trying to set up a list of people from each centre that are willing to host billets for a workshop. You may not be planning to attend the workshop yourself but you may be willing to have a guest for the night.

It is suggested that a flat fee of say \$40 per night could be paid in cash directly to the host. This would cover a dinner, breakfast and bed, and by negotiation lunch for the next day.

If you wanted something different, you could negotiate that between yourselves. The visitor should advise the host of special dietary needs.

For member's privacy, I am willing to act as co-ordinator to link visitors with hosts. No money is to be paid to the PSA. [treasurer@ozpastels.com.au](mailto:treasurer@ozpastels.com.au)

## GOALS TO WORK TOWARDS in 2017

- MARCH - **ALL** MEMBERS ONLINE COMPETITION
- APRIL SET SUBJECT - ALL GROUPS – “SHOW STOPPER”
- JULY - PSA ANNUAL AWARDS and EXHIBITION including the BARBARA ALEXANDRA AWARDS
- SEPTEMBER SET SUBJECT - ALL GROUPS - “LIGHT AND SHADE”
- OCTOBER - **COUNTRY** MEMBERS ONLINE COMPETITION

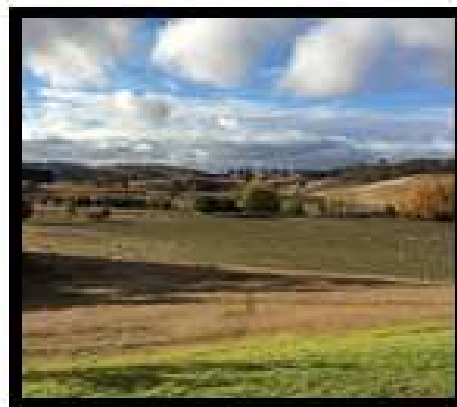
---

WE WANT TO REPORT YOUR SUCCESSES ON THE “CONGRATULATIONS BANNER” PLEASE LET US KNOW OF ANY PASTEL AWARDS OR PRIZES WON EACH MONTH.

---

LET MEMBERS KNOW IN TIME ABOUT COMPETITIONS IN YOUR AREA THAT THEY MIGHT LIKE TO ENTER

---



**A plein air farm stay and/or an indoor studio experience**

Enjoy a painting experience at Kentucky NSW (40km south of Armidale). Time frame, exclusive of travel, will be four full days of painting 8 - 12 May 2017. This is a time to explore a 1400 acre rural property and paint on site each day without interruption. No daily travel necessary, live, eat and paint from the doorstep. No tutoring, just great fellowship and focused companions who aspire to a purpose allocated painting experience. Costs cover accommodation for 5 nights plus the hire of a beautiful indoor studio for our 4 painting days. Prices from \$392 single room and from \$196 twin share. **LIMITED SPACES.** Self cater facilities

Contact Louise Corke for more information or to register your interest  
[lou2345@bigpond.net.au](mailto:lou2345@bigpond.net.au) 0419 644 665

## DEMONSTRATION REPORTS

### SUNSHINE COAST

#### Christmas Break - Round Robin



The 2016 Christmas breakup featured a round robin with 4 master pastellists – Tricia Taylor who chose to do a coastal scene from near Kaikoura in New Zealand, Karol Oakley who did a still life bowl of lemons, Chris Blake who did a scene of fishing boats and Christine Clarke who painted

children on the beach, and with Jayne Jackson as commentator.

The whole thing was a bit like a horse race... And they're off! But look here, Oakley, Blake and Clarke have jumped the gun. They've already marked in key lines for their drawings.

That puts Taylor behind at the start. She's catching up though with some deft lines showing divisions of tone and colour, some soft greens for the headland in the background and some brighter oranges and yellows for the sunlit

rocks. These rocks will be her focal point. Further ahead, Oakley blocks in the main tones around her still life, Blake lays down the bright red and dark, warm blue on the hulls of the boats. His water is already green. Clarke paints up a storm on the beach (maybe a wave or two) with her short touch-and-lift impressionist strokes.

We're coming into the turn and paintings are rotated. Oakley blocks in the rest of Taylor's landscape and Blake does the same to Oakley's still life. But look!



There's some jostling in the centre there. Blake picks up his favourite Flinders Blue Violet and starts to lay it on.

"OH NO!" screams Oakley. "There are better

darks to use than that." Deaf to it all, Blake carries on.

"Times up," calls the commentator. "Move them round."

And so the race continues. There are 5 rotations in all. In the end, the works go back to the original artist who has about 20 minutes (with some arm twisting) to 'fix' them and do the finishing touches.

Clarke takes a brush to some of the work that others had done.

She knocks back the



skin on the figures. She needs darks at first to build up the flesh tones. Then she goes over that with lighter, warmer skin tones and starts to add the highlights. She gets some darker tones in the foreground rocks and pink in the foreground sand. She details colour and shadows around the figures, finishing with the lights and uses charcoal to pick out the figures.

Taylor works on aerial perspective so the greens in the distance aren't the same colour as the greens. She also puts in dark foliage details to develop the Fibonacci curves that lead the eye in a circular motion into the painting.

Oakley works on her strong darks – a cool phtalo blue /green. She stays away from Flinders blue violet because she says that if she wants something light over it, it tends to go muddy. She also tends not to use black as it leaves a dark hole. Even shadows have colour. She keeps it quite loose and gets a flow of light spots and dots spiralling in to the whitest white flowers on the edge of the bowl. There's old

Fibonacci again! She refines edges. In some areas, she uses a stick to blend the edges together. She sharpens other edges.

Blake gets back to the drawing. He wants to see movement. The painting is not a dead copy of the photo. It has a painterly effect with the usual, brilliant Blake colour. He marks in ropes, rails and rigging.

And we come to the finish. It's neck and neck. Stop! The masters have to go to the back of the room and view their paintings from a distance.

The paintings were auctioned.



## **2017 STANTHORPE PLEIN AIR PAINT-OUT**

**26<sup>th</sup> March - 2<sup>nd</sup> April 2017**



**Arrive Sunday, 26<sup>th</sup> March  
- depart Sunday, 2<sup>nd</sup> April 2017**

Plein air painting starting Monday at various locations around Stanthorpe and surrounding areas including Girraween National Park. The idea of this paint-out is the enjoyment of painting with likeminded artists with your chosen medium, exchanging ideas and camaraderie.

A Program Guide listing venues and activities will be issued at a later date.

### **Enquiries for Registration & Accommodation**

Please contact ASAP :

Penelope Gilbert-Ng: [p\\_gilbertng@optusnet.com.au](mailto:p_gilbertng@optusnet.com.au)

Phone: 0403 882 079

or

Betty Sutton: [betty.sutton@bigpond.com](mailto:betty.sutton@bigpond.com)

Phone: 0417 672 771

**Fund Raising for  
THE INAUGURAL PASTEL EXPO  
September 2018**

**We are raffling this donated painting by internationally acclaimed artist  
ELIZABETH MOWRY.**



**Elizabeth Mowry is a Master Pastellist in the Pastel Society of America and a recipient of more than forty landscape awards. She is an author and her work has been published in numerous anthologies and magazines. Her books include 'The Poetic Landscape', 'Landscape Meditations', 'Landscape Painting in Pastel: Techniques and Tips From a Lifetime of Painting', and 'The Pastelist's Year'.**

***Her artworks are investment pieces!***



**We will be raffling this painting, unframed but matted,  
at all the February and March General Meetings.**

**\$2 per ticket or \$20 for a book of 25 tickets. Bonus!.**

**Be quick to get your tickets!**

**Would you like to help us raise funds by selling tickets for the PSA -  
Just let us know and we can organise to send you some tickets to sell in your area.**

## END of YEAR CHRISTMAS PARTY and AWARDS NIGHT 2nd December 2016.

Despite the heat on the morning of 2nd December several committee members and some willing PSA members turned up to set up and decorate the Community Hall at the Mt Gravatt Showgrounds. Thanks to Barbara Alexandra, our well-wisher in Melbourne, who kindly gave us a generous donation towards the party, we were able to order platters for supper.



In the evening the Brisbane members were happy to welcome members from both the Sunshine Coast and Gold Coast groups. The baskets placed at the front door soon filled as members responded to a request to bring gifts in support of Foster Care Queensland.

Our generosity was much appreciated. (See the Certificate on the Noticeboard)

Over 20 members brought paintings to participate in the Painting Swap. They were all unwrapped so we were able to marvel at the quality of the work on display as we socialised and

greeted friends. It was great fun later in the evening, as names were drawn from a Christmas hat, to receive a painting from another member, to take home.

Our President, Suzanne Robinson, asked us to move to our tables and then welcomed us all to get the Party under way.

The entertainment for the evening was put on by Chris Blake and

Graham W. Smith. Both had dressed up – despite the heat - and provided much hilarity with their banter as they fooled around, working on each other's paintings, and regaling us with their stories.



The serious side of the evening followed with the Presentation of Trophies, Award and certificates.

All PSA members are eligible for the following 2 Trophies.

The John Jeffrey Trophy was donated



by our founder, Ivy Jeffrey, in memory of her husband and co-founder of the PSA. It is awarded to a member who has given great service to the PSA. The winner for 2016 is our very hard working Treasurer, Vanessa Thomas.

The John Thiesfield Trophy was donated by Gwen Thiesfield in memory of her husband and past President of the PSA. It is an Encouragement Award to reflect John's dedication to encouraging new members on their Pastel journey. The winner for 2016 is Lesley West, from the Gold Coast group. She joined the PSA less than a year ago, has attended several workshops and shown great enthusiasm and progress. A worthy winner!

Only members who attend the Brisbane General meetings are eligible for the following Awards.

Members are encouraged to bring in a painting to display each month. (9 times in all) Records are kept. The winner / winners of the Participation Award will have participated the

most.

General Member winners: Mark Lawrence, Gail Lusted and Calvin Rose.



Master Pastellists winner: Penelope Gilbert Ng  
Each month the members give their favourite paint-sections their vote. Votes are tallied and the Member the artists with the highest votes for the year.

G M Members' Choice Award for 2016

Winner: Hettie Rowley.

Runners-up: Mark Lawrence and Gail Lusted

MP Members Choice Award for 2016

Winner: Penelope Gilbert Ng. Runners-up:

Margaret Turner and Tricia Reust

The ONLINE Competition is open to all members

GM Winner: Terri Giesen

Second: Marlene Millard

Third: Maria Paterson

Highly Commended:

Lynette Ansari and Gail Lusted

MP Winner: Anne Yang

Second: Penelope Gilbert Ng

Third: Tricia Taylor



The Country Members Online Competition is not open to Brisbane residents.

- GM Winner: Jenni Johns
- Second: Marlene Millard
- Highly Commended: Moira Shapcott
- MP Winner: Mabs Vandenberg
- Second: Anne Yang

New Life Member – In recognition of her dedication to the PSA, teaching, mentoring and serving as a committee member and President of the PSA --- Penelope Gilbert Ng was presented with a special apron to keep as a memento of the honour she received - being made a Life Member of the PSA in 2016



The paintings done at the November General Meeting in Brisbane – Paint Around – by Tricia Taylor, Tricia Reust , Penelope Gilbert Ng and Chris Balke were matted before being auctioned to raise funds. Chris was a very enthusiastic Auctioneer and egged members to up their bids.



Chris Blake



Tricia Taylor

Penelope  
Gilbert Ng



Tricia Reust



# WORKSHOPS

2017



WWW.ARTABLE.COM.AU

## ARTABLE PASTEL WORKSHOPS

WITH VISITING INTERNATIONAL ARTISTS



### SALLY STRAND (USA)

**WHEN: 13-23 MARCH 2017**  
**LENGTH: 10 DAYS**  
**WHERE: BATEMAN'S BAY, NSW**  
**COST: \$4995PP**

An outstanding opportunity to spend 10 days being mentored by world renowned artist Sally Strand. Having reached the highest level of achievement through the International Pastel Society combined with a very successful career as a full time artist, Sally is enormously sought after for her skills & teaching. After years of trying to bring this artist to Australia, we now have her on our shores where you can access her. This workshop combines the best of mentoring & painting time in studio, with the perfect beachfront holiday. See the website for the full itinerary. Only 3 spots left.

\*This tour is under 'painting holidays' on the Artable website

### JUDITH CARDUCCI (USA)

**WHEN: 5-9 JULY 2017**  
**LENGTH: 5 DAYS**  
**WHERE: TYALGUM, NSW**  
**COST: \$1295PP**

Renowned & respected not just for pastel, but for her strengths in portraiture, we are incredibly excited to include Judy Carducci in our 5 day Tyalgum Art Retreat (7 artists to choose from). At 83, this is Judy's last visit to Australia and you can take advantage of her full career as an artist and wealth of knowledge & experience to learn portraiture. As part of our retreat, the workshop price is incredibly low and accommodation simple. We have only 10 spots and are offering The Pastel Society of Australia members first option to book before we tell everyone else. Don't miss out.

\*This workshop is under 'weekend workshops' on the Artable website

[www.artable.com.au](http://www.artable.com.au) - 0411 317 606

## COUNTRY MEMBERS ONLINE COMPETITION

### WINNERS:

#### GENERAL MEMBERS

FIRST PRIZE: Storm over Yamba – Jenni Johns



This painting is beautifully executed resulting in the WOW factor for impact, drama and beautiful light. The artist shows a competent use of pastels in drawing reflections and textures in the water as well as executing dramatic light effects in the sky. The viewer is able to sense the drama of the storm.

2ND PRIZE: Otway Splendour – Marlene Millard



The artist has depicted the tranquillity of the rainforest and its soft subtle lighting effects. You can feel the density in the moisture laden ferns and follow through to the gum tree landscape behind. The painting is a competent piece of work with a sound technical knowledge of pastel.

### HIGHLY COMMENDED:

Dharma – Moira Shapcott



This painting is clean in its execution and the character of the dog comes across in the painting.

## MASTER PASTELLISTS

### FIRST PRIZE:

Bounty of the Ocean – Mabs Vandenberg



The artist has chosen a lateral thinking choice of subject matter. The luminosity of the pearls is eye catching with an instantly recognised focal point. The luminosity in the pearls, achieved by a light glazing application of pastel, shows competent and good technical skills in the pastel medium. This is an interesting and beautiful piece of work.

### 2ND PRIZE:

Rhododendron – Anne Yang



This painting is a delightful tonal study with flowing soft edges where the viewer is able to feel the tranquillity of the flowers. Soft pastel colours harmonise the painting beautifully.



TOURS AND CLASSES

# Southern France 2017

With Tricia Taylor



Painting holiday in France with  
Master Pastellist Tricia Taylor  
17<sup>th</sup> to 26<sup>th</sup> August 2017

The beauty of Southern France calls!

Come and enjoy the true French Countryside on this fantastic Artist's Escape. Staying in the exquisite Domaine Du Haut Baran in Puy L'Eveque, just north of Toulouse in Southern France, we will be exploring the true French countryside by painting *en plein air*. For more information go to my website [triciataylorart.com.au](http://triciataylorart.com.au)

or call 0419 176 986

[taylorartoriginals@gmail.com](mailto:taylorartoriginals@gmail.com)

# ADVERTISERS



*the largest range of soft  
Pastels and Specialty Papers  
in Australia*

**Pastels**

- Art Spectrum
- Blue Earth
- Conte
- Generals
- Holbein
- NuPastel
- Rembrandt
- Schmincke
- Sennelier
- Unison

**Papers**

- Colourfix
- Colourfix Suede
- Hahnemuhle Velour
- Hahnemuhle Pastelfix
- Mi-Teintes
- Mi-Teintes TEX
- Pastelmat by Clairefontaine
- Sennelier Pastel Card
- Sennelier Velvet and Felt
- Sennelier Memoire du Pastel

We deliver Australia wide as well as internationally.

We provide value pricing everyday and run monthly specials.

We are a unique family run business with friendly service and help.

*Coming Soon: Pan Pastels*

[www.softpastels.com.au](http://www.softpastels.com.au)

Opening Hours  
M-F 6am to 6pm  
Sat 6am to 2:00pm

259 Bruncker Road, Adamstown, NSW, 2289  
Phone: 02 4957 1050  
Email: [colours@softpastels.com.au](mailto:colours@softpastels.com.au)

**MOUNT VISION PASTELS**  
**ART SPECTRUM ♦ SCHMINCKE**  
**DANIEL SMITH WATER COLOURS**  
**DERIVAN ♦ CHROMA**



**OXLADES**  
Established 1894  
*Art Supplies for all Generations*

**Paint & Art Centre**  
136 Wickham Street  
Fortitude Valley  
Ph: 07 3252 8238

**Art Essentials at QCA**  
226 Grey Street  
South Brisbane  
Ph: 07 3845 0611

**Oxlades at Redlands**  
Shop 3, 120 Queen Street  
Cleveland  
Ph: 07 3286 1971

**Art Supplies Noosa**  
Noosa Civic Emporium  
28 Eerie Creek Road  
Noosaville  
Ph: 07 5474 1045

**The Art Barn**  
192 Maxwell Street  
Cairns  
Ph: 07 4054 8555



**WE ARE  
THE MAKERS  
OF COLOUR...**

As an Australian family company founded in 1906, we take pride in our continuous development of colours of unsurpassed brilliance and intensity and the use of only permanent, light-fast pigments at maximum working strength.

Artspectrum® is dedicated to creating the finest possible artists' colours.

ARTSPECTRUM



artspectrum.com.au



## SUBMISSIONS FOR THE NEWSLETTER

The newsletter will be released bi-monthly.  
Next due out early **February 2017**.

Close off for the submission of articles is on **10th of the month** before newsletter release.

All submissions are to be sent to **Gail Lusted at fredjo@optusnet.com.au**

**Gail would appreciate submissions being sent to her over the two months – not all at the last minute.**

Preferred format for articles is Microsoft Word sent as an attachment from a PC.

Articles sent from an iPad or in the body of an email are not acceptable.

Photos as jpg attachments and not embedded in an email. Titles with photo's if possible rather than "jpg 005 or jpg 006"

Please make ALL reports in text font ARIAL Size 11.

## ARTHOUSE NORTHSIDE



**NORTHSIDE'S ONE STOP SHOP FOR ARTISTS  
ART MATERIALS & PICTURE FRAMING**

CONTACT US  
Phone: 07 38692444

Email: arthousenorthside@gmail.com

VISIT US  
Website: www.arthousenorthside.com  
Address: 140 Braun Street, Deagon 4017

**SPONSORS OF THE PASTEL SOCIETY**



Let's promote the PSA and have our brand on display.

**SHIRTS - \$50 each**  
100% Cool/ dry polyester  
Easy care, fast drying  
Moisture removal technology means moisture is whipped away from body which stays cool.



Colours ladies --- Navy and Pink  
Mens. -- Navy and white  
Ladies sizes --8-10, 12-14, 16-18, 20-22, 24-26  
----allow for small sizing and order one size up.  
Mens sizes -- S, M, L, XL, XXL, XXXL, XXXXXL  
On front----- logo  
On back-----Pastel Society of Australia Inc.  
[www.ozpastels.com.au](http://www.ozpastels.com.au)

**APRON with bib - \$35 each**  
(with branding) and pocket - black only.  
Polyester cotton. Easy wash and wear. Long for decent protection. Stitching on pocket useful for a brush or blender.



Order and pay at one meeting and collect at the next meeting

**Come and visit us at**  
[www.arthousedirect.com.au](http://www.arthousedirect.com.au)  
**for your pastel needs.**

**We stock the complete range of:**

- Unison Hand Rolled Soft Pastels
- Daler-Rowney Soft pastels
- Richeson Hand Rolled Soft pastels
- Richeson medium-soft pastels
- Richeson Semi Hard Pastels
- Richeson Street Stix
- Professional Pavement pastels
- Derwent Semi Hard Pastels
- Sakura Nouvel Carre` Artists pastels
- Sakura Specialist Oil pastels
- Cretacolor Water-soluble Artists Oil pastels
- Cretacolor Artists Sketching Chalks
- Spectrafix spray fixative
- Richeson premium pastel surfaces – hardboard and Gator board
- Zest-it blending mediums

Plus a whole host of accessories

*Check out our Christmas specials on Unison and Richeson Signature pastels!!*



**Bendigo**  
159 McCrae St,  
Bendigo VIC 3550  
Ph: (03) 5443 9700

**Essendon**  
114 Buckley St,  
Essendon VIC 3040  
Ph: (03) 9337 3594

**Richmond**  
236 Swan St,  
Richmond VIC 3121  
Ph: (03) 9428 1511

**Sunbury**  
2B Old Bakery Walk,  
Sunbury VIC 3429  
Ph: (03) 9740 7487

**Nowra**  
6/68 North Street  
Nowra NSW 2541  
Ph: (02) 4421 6821

[www.arthousedirect.com.au](http://www.arthousedirect.com.au)

## The Pastel Society of Australia Annual Online Competition 2017

### ALL MEMBERS ONLINE COMPETITION

#### CONDITIONS OF ENTRY

1. This competition is open to financial members only.
2. All entries are to be pastel. Works may be on any surface including canvas. Mixed media is acceptable with at least 75% pastel on top.
3. Entries must be the original work of the entrant, which precludes works completed in workshops or under tutelage, and /or copied from any source other than belonging to the entrant. Source material to be available if requested. Entries must have been completed in the last two years and must not have previously won an award with the PSA.
4. Only one entry per member.
5. Entry is free.
6. Categories are Master Pastellists and General Members. Each section winner receives a \$100 in cash or product. Paintings can be traditional or contemporary in style.
7. If you want your work to be for sale you must give us permission to add your email address to your photo.
8. Media reproduction of entries is to be allowed for promotional purposes by PSA.
9. Artworks will be judged on creativity, originality and artistic merit from the digital images submitted by the entrant. To ensure that your artwork meets the criteria, please read the article on our TIPS AND TRICKS page on our website on how to photograph your artwork correctly.
10. Files must be in JPEG format and may not be smaller than 500 KB or exceed 1MB.
11. Send images of your unframed work. Photos over glass are unacceptable. Do not crop parts of your work or enhance it in any way. (Photoshopped)
12. Entries open Monday 3 March and close Friday 31 March 2017
13. Winners will be announced by the end of April 2017  
After the judging all images/paintings will be displayed on the PSA website.

How to enter:

**THE ONLINE ENTRY FORM WILL BE ON THE PSA WEBSITE IN MARCH 2017**

**[WWW.OZPASTELS.COM.AU](http://WWW.OZPASTELS.COM.AU)**

**PSA COMMITTEE****The Pastel Society of Australia Inc**

ABN 19639 420 407

NEW Address for all correspondence:

The Secretary: PO Box 3542, Victoria Point West Qld. 4165 Australia

Website: [www.ozpastels.com.au](http://www.ozpastels.com.au)

President Sue Robinson Phone: 0429 789 266 Email: <a href="mailto:president@ozpastels.com.au">president@ozpastels.com.au</a>	Secretary Position Vacant Email: <a href="mailto:secretary@ozpastels.com.au">secretary@ozpastels.com.au</a>	Treasurer Vanessa Thomas Phone: 0414 571 090 Email: <a href="mailto:treasurerozpastels@gmail.com">treasurerozpastels@gmail.com</a>
Vice President Geoff May Phone: 0412-379682 Email: <a href="mailto:gbmay01@gmail.com">gbmay01@gmail.com</a>	Minutes Secretary Margaret Turner Phone: 07 3300 5340 Email: <a href="mailto:mturner@webone.com.au">mturner@webone.com.au</a>	Membership Secretary Vacant  <a href="mailto:membershipsecretary@ozpastels.com.au">membershipsecretary@ozpastels.com.au</a>
Committee Member John Rhoden Phone: 0451 117 514 Email: <a href="mailto:jrhoden46@bigpond.com">jrhoden46@bigpond.com</a>	Committee Member Gail Lusted Phone: 0422 217 582 Email: <a href="mailto:fredjo@optusnet.com.au">fredjo@optusnet.com.au</a>	Committee Member Terry Wilkinson Phone: 07 3207 6134 Email: <a href="mailto:terrywilkinson@bigpond.com">terrywilkinson@bigpond.com</a>
Committee Member Hettie Rowley Phone: 0406 180 121 Email: <a href="mailto:hettie@magickmirrors.com">hettie@magickmirrors.com</a>	Webmaster Margaret Turner Phone: 07 3300 5340 Email: <a href="mailto:webmaster@ozpastels.com.au">webmaster@ozpastels.com.au</a>	Communications & Advertising Vacant Phone: Email: <a href="mailto:commsozpastels@gmail.com">commsozpastels@gmail.com</a>
Newsletter Team - Co-ordinator Gail Lusted Phone: 0422 217 582 Email: <a href="mailto:fredjo@optusnet.com.au">fredjo@optusnet.com.au</a>	Newsletter Team Hettie Rowley	Newsletter Team (Postal/Mail out) Margaret Ollerenshaw Phone: 0435 413 726 Email: <a href="mailto:garry.o@hotmail.com">garry.o@hotmail.com</a>
Exhibition Co-ordinator Margaret van Maanen Phone: 07 3893 1088 Email: <a href="mailto:exhibitioncoordinator@ozpastels.com.au">exhibitioncoordinator@ozpastels.com.au</a>	Online Members Competition Hettie Rowley Phone 0406 180 121 Email: <a href="mailto:CompetitionsOzpastels@gmail.com">CompetitionsOzpastels@gmail.com</a>	Master Pastellist Submissions Penelope Gilbert-Ng Phone: 0403 882 079 Email: <a href="mailto:mpsubmissionsofficer@ozpastels.com.au">mpsubmissionsofficer@ozpastels.com.au</a>
Library Greg Steele Phone: 07 3261 7972 Email: <a href="mailto:gregorymarj57@outlook.com">gregorymarj57@outlook.com</a>	BVAC Liaison Officer Vacant Phone:	Promotions Officer Vacant

BRISBANE	SUNSHINE COAST	GOLD COAST
Meeting Reception–Brisbane Joy Richards Phone: 0403 235 701 Email: gwenda.joy.richards@gmail.com	Co-ordinator of the Sunshine Coast Anne Yang Phone: 0402 405 700 Email: anne@creations-art.com	Co-ordinator of the Gold Coast Louise Corke Phone: 0419 644 665 Email: lou2345@bigpond.net.au
Meeting Demonstration Co-ordinator – Brisbane Hettie Rowley Phone 0406 180 121 Email: hettie@magickmirrors.com	Meeting Demonstration Team Sunshine Coast Sally Thomson Phone: 0403 017 832 Email: sally@sallythomson.com	Meeting Demonstration Team Gold Coast Louise Corke Phone: 0419 644 665 Email: lou2345@bigpond.net.au
Workshop Co-ordinator Brisbane Vacant Phone: Email: workshopscoordinator@ozpastels.com.au	Workshop Co-ordinator SS Coast Sally Thomson Phone: 0403 017 832 Email: sally@sallythomson.com	Workshop Team Gold Coast Louise Corke Phone:0419 644 665 Email: lou2345@bigpond.com.au
Workshop Leader Brisbane Greg Steele Phone: 07 3261 7972 Email: gregorymarj57@outlook.com	Workshop Leader SS Coast Jenny Simpson Phone: 0407 164 390 Email: jennifersimpson12@bigpond.com	Conference Expo Team Tricia Taylor Judy Banks Vanessa Thomas Penelope Gilbert Ny Betty Sutton Joanne Cotton Karol Oakley Louise Corke Ron Bryant

### 2017 LIST OF COMPETITIONS

Where possible competitions are listed under the month the entries close.

For a list of some competitions around the country in a monthly calendar layout, check out:

<http://www.art-prizes.com.au/>

Tip: Australian Artist (AA) list monthly competitions from around Australia.

AA also runs their own themed online art challenge:

<https://www.australianartist.com.au/competitions>

The Society would appreciate members contributing to this list – please send information to the newsletter co-ordinator.

The information required includes:

- Area or Title of exhibition
- Two contacts – either web/email or phone/address
- The month by which entries are due/close