

The Pastellist

The Pastel Society of Australia Inc.

Established by John and Ivy Jeffrey in 1985

Welcome to the Pastel Society of Australia Inc.'s August 2018 newsletter!

Our inaugural **Pastel EXPO** is now only weeks away, it's been a huge task to organise and we're very excited to see it all unfold.

This year we're combining the **EXPO** with the **2018 Annual Exhibition and Alexandra Awards** in Caloundra. Entries close on 31st August, so don't delay! You'll find entry forms and all the details on pages 6 to 10 of this newsletter.

Visit our EXPO 2018 website at: www.australianpasteexpo.com.au to get up-to-date information about the workshops, demonstrations and evening events at September's Pastel EXPO. We also have a Facebook page so come and join us there too!



Visit our website at: www.ozpastels.com.au to get detailed information about events, demonstrations and workshop schedules, competitions, meetings and news.



**ENTER THE
Alexandra Awards**

15



**EXPO
Details**

5



**WORKSHOP
Schedules**

13

We gratefully acknowledge Steven Huang's BCC Ward office - who kindly print and staple our Newsletter (in black and white at no charge – not even for the paper) for members who need a hard copy posted to them.

Welcome and thank you for joining us for a chance to share our news, ideas and lessons. We have a wonderful couple of months coming up as you mostly know but for those just joining us check out the EXPO web site and the PSA site with what is coming.

We have the privilege of hosting the former President, Liz Haywood Sullivan of the International Pastel Society. Liz is a member of the IAPS Master circle, and a tutor of renown, who travels her country of USA and the world teaching our beautiful medium with such passion and skill.

We are truly blessed people to be able to express ourselves through this soft versatile medium, which provides a growing stage for our expression of ideas and beauty. What an opportunity. My excitement is at present a little like a bee in a bottle, electric, buzzing, flying in many directions, finding it hard to keep my feet on the ground and cannot wait for the lid to come off and experience the freedom to express my enthusiasm.

Our own master circle are so busy this year, many travelling Australia and world wide tutoring but they and others have also done a huge amount of work in the preparations for this coming event and we could not have even anticipated the event without their dedication. Most specifically Tricia Taylor who is the project manager and has put in hundreds if not thousands of work hours in kind to stage this event. Thank you so much to all as the ship (society) does not move forward without the energy within the group and Committee to steer and navigate. We are so honored to have such passionate pastel artists.

Personally having been a member for some twenty years, it is wonderful to see a small group like ours grow so much in a couple of years not just in numbers which have increased a lot but the skill and work level which has presented in the last two years is a sight to behold and we have truly stepped up to the plate and become the Pastel Society of Australia congratulations one and all I applaud you all, and thank you humbly for enabling me to be your voice.

Cheers,

Suzanne

Suzanne Robinson

President, Pastel Society of Australia Inc.



Contents

- President's Report..... 2**
- Expo Tutors 4**
- Noticeboard..... 5**
- Competition Winners 6-7**
- Demonstration Schedule 8**
- Workshop Schedule for 2018 9**
- Workshops 10 - 12**
- Demo Report 13 - 15**
- Notice of Competitions 16**
- Annual Exhibition & Alexandra Awards 17**
- Committee Members 24**
- Expo Schedule..... 25**
- Submitting to the Newsletter..... 29**
- Thanks to our Sponsors 29**

Australia's Inaugural
Pastel Exposition 2018

Hosted by the Pastel Society of Australia Inc.

**Thursday 13th - Sunday 16th
September 2018**

**Registration: Wednesday 12th September
3.30pm - 5pm**

Caloundra Events Centre

***Australia's first pastel
convention is now only
weeks away!***

We are looking forward to a fun-filled 4-Day Expo including pastel workshops, demonstrations, lectures, trade stalls, paint-outs, plein air sessions, Master Pastellist Exhibition, and so much more will be on offer all under one roof. See the website for all the details: <https://www.australianpastelexpo.com.au/>

**We've attached the Schedule at the end of this newsletter for your reference.

We are delighted to announce that the Pastel Society of Australia will be concurrently holding the 2018 Annual Exhibition

at Caloundra BreakFree Resort conference centre.

Entries close 31st August 2018, for more details and

entry forms please go to: <http://ozpastels.com.au/event/psa-annual-awards-exhibition/>



Rates:

PSA Members \$650 for the 4 days

non-PSA members: \$750 for 4 days

Day rate: \$220 per day

Includes all food and drink

Registration: Wednesday 12th September 3.30pm - 5pm

Pre-order your workshop materials and collect them at the Expo. Order today on this link: <https://www.australianpastelexpo.com.au/order-materials>



**Find us on Facebook at
Australian Pastel Expo**

The Pastel EXPO 2018 is supported by the Queensland Government through Arts Queensland. The Regional Arts Development Fund is a partnership between the Queensland Government and the Sunshine Coast to support local arts and culture in regional Queensland.

Featuring some of the tutors who will be running workshops at the Australian Pastel Expo from Thursday 13th - Sunday 16th September.



Chris Blake MP PSA

Master Pastellist Chris Blake is a London-born Australian artist working mostly in oils and pastels. A Master Pastellist with the Pastel Society of Australia he paints landscapes, town-scapes, marine subjects, boats and action and human interest subjects.



Louise Corke MP PSA

Master Pastellist Louise Corke's journey with pastels began in 1993. "Since that time I have loved every minute of every pastel experience...I think they were made for me. I consider painting like a dance that is pure gestural expression. I marry my heart to my hand and together they speak visual music."



Lyn Diefenbach MP PSA

Lyn Diefenbach comes with more than 25 years experience as a tutor in both pastels and oils. Lyn received her Masters Circle medallion at IAPS in 2015. Recognised as a Master Pastellist by the Pastel Society of Australia for many years, Lyn was accepted into the Pastel Society of America as a Signature Member in 2016. She is also a juried member of the International Guild of Realism.



Liz Haywood Sullivan USA

Liz Haywood-Sullivan, PSA-MP, IAPS/MC, was president of the International Association of Pastel Societies from 2013 to 2017, where she managed three IAPS conventions and 12 international exhibitions. She has authored a popular book about pastel and her award-winning paintings are highly collectible. A sought-after instructor, she teaches workshops around the United States as well as internationally. She is traveling to be at the Expo from her home in Boston, Massachusetts.



Betty Sutton MP PSA

Betty Sutton was awarded Master Pastellist Status with the PSA in 2011. She has a love for plein air painting and has vast experience in different papers and pastels ready to share with you.

Go to <https://www.australianpastelexpo.com.au/tutors> to find all tutors, workshops and demos



ANNUAL
**PSA
 EXHIBITION**

& ALEXANDRA AWARDS

CALOUNDRA, QLD

11 - 16 SEPTEMBER 2018

Hurry!

Entries close 31st August

See Page 15-19 for details

SAVE THE DATE!

Xmas Party

Tuesday 27th November

from 11.30am to 2pm at the
 Southern Cross Community Club at
 51 Klump Road Mt Gravatt.

- Meals will be available to order from \$10
- Presentation of End of Year Awards.
- Spouses, partners & friends are welcome

RSVP to Kelcey Burman
 secretaryozpastels@gmail.com's



Tricia Taylor:

The PSA is honoured to announce that Tricia Taylor is now a life member of the PSA. This is in recognition of her amazing contributions to the PSA over many years. She has been crucially instrumental in establishing the Sunshine Coast group, conducted many workshops, served on the committee and inspired us all. Tricia has been the driving force in establishing the inaugural 2018 Australian Pastel expo. In many ways when Tricia stepped down

from being the President she stepped up in other capacities to the benefit of us all, both nationally and internationally.

Tricia Taylor was awarded Master Pastellist status with the Pastel Society of Australia in 2011 and has won many awards including Pastellist of the Year 2010. Tricia's work has been published in a variety of national art magazines including Australian Artist, Art Edit and Paint and Draw Magazine UK. Teaching from beginners to advanced students for many years Tricia's workshops are in demand in Australia and internationally including Fiji, New Zealand and the USA. Unison pastels have also accredited her as a Unison Artist and created two Tricia Taylor Unison pastel sets reflecting her love of seascapes and landscapes.

Tricia has humbly said that she gains more than she gives especially in her role as a mentor. She also has thanked John Thiesfield for giving her the courage and inspiration to forge ahead with a career as a professional artist.

We are thrilled to have Tricia Taylor as a life member of the PSA and thank her for her many years of hard work and look forward to her many paintings to come.



Congratulations to Leanne Driver who came first at the Royal Darwin Show with 'Who's Looking' in the 'any other art' category. Congratulations!



First Prize and People's Choice
'Path to the Beach' by Betty Sutton

Congratulations to Betty Sutton on her win for Overall Winner and People's Choice at the recent Tin Can Bay Art Exhibition.

The theme: Reflecting the Cooloola lifestyle.



'The Letter' by Marilyn Murray. Marilyn was delighted to be selected as a finalist in the Percival Portrait Painting Prize at the Perc Tucker Gallery in Townsville. Her pastel painting was of her mother-in-law who passed away last year at the age of 97.

Marilyn was also awarded the Grand Champion award at the Childers Show recently for "Prima Ballerina".



Best in Show 'Mother and Child' by Tricia Taylor

Congratulations to Tricia Taylor for her 'Best in Show' for "Mother and Child" at Oatley 101 Art Society Exhibition, Oastey NSW.



Congratulations to Penelope Gilbert-Ng on her win for Champion Portrait at the EKKA with 'Best of Friends', a pastel painted of a man and his beloved galah who she sees most days as he walks his friend. Their obvious love if each other's company ignited Penelope's desire to capture the moment. Pastel over watercolour on Colourfix white paper. A beautiful pastel indeed and well deserved.

First Prize 'Best of Friends' by Penelope Gilbert-Ng

2018 EKKA Art Exhibition Winners

Champion Portrait of Show

Penelope Gilbert-Ng; 'Best of Friends' First

Native Australian Wildlife - any medium

Deborah Bond; 'Flying High' Commended

Drawing - Open Subject

Louise Corke;	'The Lone Dancer'	Second
Gail Lusted;	'Gregory'	Third
Louise Corke;	'Fresh as a Daisy'	Highly Commended
Tricia Reust;	'Charcoal Head Study'	Highly Commended

Traditional Watercolour - Open Subject

Joan McNaught; 'Evening Glow' Highly Commended

Marine Seascape - any medium

Mel Bridges;	'Outgoing Tide'	Third
Margaret Ollerenshaw;	untitled	Commended

Open Class using soft pastels

Sally Thomson;	'Storm Breaking'	Second
Margaret Turner;	'Fraser Island'	Third
Gail Lusted;	untitled	Commended
Penelope Gilbert-Ng;	'Lost'	Commended

Non-traditional Painting or Drawing

Debra Bond; 'Burn' Commended

Still Life

Christine Atkins; untitled Commended

Entry: Members \$5, non-members \$10

Brisbane - 7pm, first Tuesday of each month at Mt Gravatt Showgrounds, Community Hall (upstairs), 1644 Logan Rd, Mt Gravatt. Coordinator: Margaret Van Maanen, 0423117730

DATE	TUTOR	THEME
7 August, 2018	Chris Blake	Landscapes
4 September, 2018	No meeting due to EXPO	
2 October, 2018	Chris Clark	Learning to draw figures
6 November, 2018	Margaret Turner	Floral painting
4 December, 2018	Christmas Breakup	

Gold Coast - 1pm, first Saturday of each month upstairs at RQAS, 25 Broadbeach Blvd, Broadbeach. Coordinator: Louise Corke, lou2345@bigpond.net.au

DATE	TUTOR	THEME
4 August, 2018	Anne Yang	Still Life in Bold Colour
1 September, 2018	No meeting due to EXPO	
6 October, 2018	Joan Macnaught	TBC
3 November, 2018	TBA	

Sunshine Coast - 6.30pm, third Wednesday of each month at Woombye School of Arts, 1-3 Hill Street, Woombye. Coordinator: Kay Weber, keyweber@bigpond.net.au

DATE	TUTOR	THEME
15 August, 2018	Louise Corke	Creating crescendos in a garden
12 - 16 September	No meeting due to EXPO	
17 October, 2018	Christopher Blake	A French street scene
21 November, 2018	Christmas Breakup	

Look out for October's
BUMPER ISSUE of *The Pastellist*
 with reports and photos from our
 Inaugural Pastel Expo.

If you are attending the EXPO and have reports and images to share with us, we'd love your contributions for the next newsletter.

Simply write your report and attach it to an email, along with your photos and send to
 jeannecotterbrisbane@gmail.com
 before October 1st 2018

BRISBANE

Coordinator: Lynette Ansari - workshopsozpastels@gmail.com

CODE	DATE	TUTOR	THEME	VENUE
B1018	20 & 21 October 2018	Karol Oakley	Plein-air painting with the best of both worlds: Half day out and a half day in the studio. 1. Waterscapes: water in the landscape 2. Planning a painting for those who want success	Queen Alexandra Home, 347 Old Cleveland Road Coorparoo

GOLD COAST

Coordinator: Louise Corke, lou2345@bigpond.net.au

CODE	DATE	TUTOR	THEME	VENUE
G1118	4 November 2018	TBA		Wisteria Cottage Mt Tambourine

SUNSHINE COAST

Coordinator: Pat Pennell, kppennell@bigpond.com

CODE	DATE	TUTOR	THEME	VENUE

DARWIN NT

Coordinator: Geoff May, gbmay01@gmail.com

CODE	DATE	TUTOR	THEME	VENUE
D1018-A	6 - 7 October 2018	Tricia Reust	Pastel over mixed media	TBA
D1018-B	13 - 14 October 2018	Tricia Reust	Pastel over texture on paper	TBA

Wet pastel on paper in landscape

Tricia Reust

2 day Workshop

6th - 7th October 2018

8.30am - 4.00pm

DARWIN

Outline – On the first day, participants will briefly cover landscape and colour theory; create a textured ground on one sheet of paper; and create the composition and underpainting for their second pastel work. (There is the choice to do either a complementary or a harmonious underpainting for this second pastel work). Both pastel landscapes will be completed on the second day.



About Tricia: Tricia Reust is a visual artist working in most media. She exhibits regularly, teaches, and judges competitions.

Tricia is a member of several art societies and is a Master Pastellist with the Pastel Society of Australia. Among many awards she won the National Mortimore Prize in 2012, and has had work accepted numerous times in the Bald Archy National Touring Exhibition. She has recorded an episode on TV's "Colour in Your Life", is published in International books and the Australian Artist magazine; her book "Landscape as Story" is available on Amazon and she has three instructional videos available through Pulsar Productions.

Details:

DVAA, Frog Hollow Centre for the Arts, 56 Woods Street. Darwin, NT

Time: 8:30 setup, 9:00 start to 4:00pm

Cost: 2 day workshop is \$180 for PSA members (\$220 non-members). Materials list available on website.

To book this workshop go to <https://ozpastels.com.au/events/category/workshops/workshops-darwin/>

For more information contact: Helena Gibbons, M: 0407252030. Email: helenag_em@bigpond.com

Using Pastel with Mixed Media on Canvas

Tricia Reust

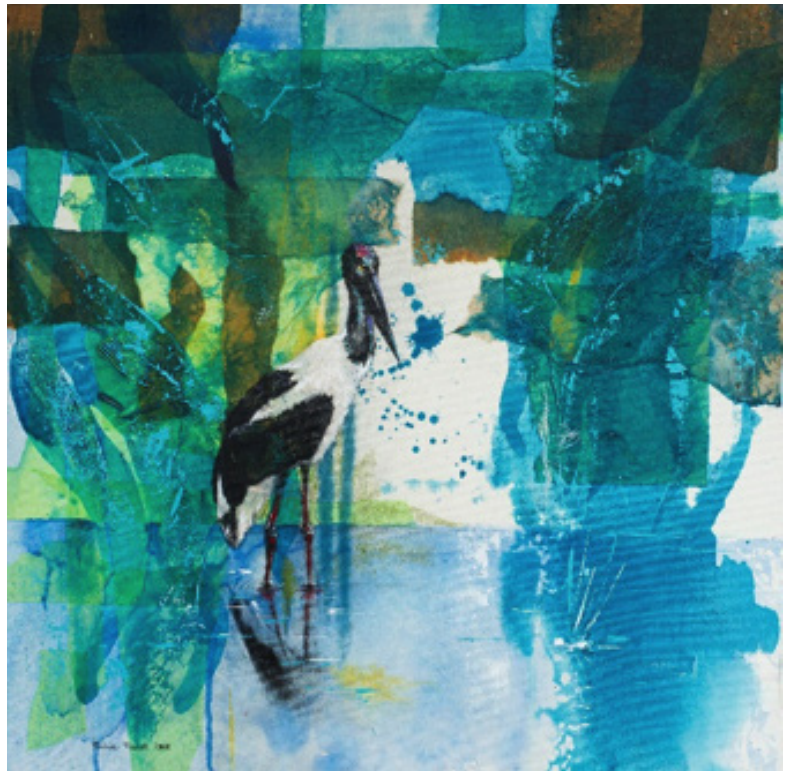
2 day Workshop

13th - 14th October 2018

8.30am - 4.00pm

DARWIN

Outline – Choosing to work in a TRADITIONAL or CONTEMPORARY style, we will create a landscape OR draw a pastel motif over a collage and texture on canvas, using acrylic paint and pastel (and charcoal optional). We will briefly cover landscape theory, create the collage, apply texture, place an initial acrylic paint wash, and then complete the work with acrylic paint glazes and pastel (and charcoal is optional).



About Tricia: Tricia Reust is a visual artist working in most media. She exhibits regularly, teaches, and judges competitions.

Tricia is a member of several art societies and is a Master Pastellist with the Pastel Society of Australia. Among many awards she won the National Mortimore Prize in 2012, and has had work accepted numerous times in the Bald Archy National Touring Exhibition. She has recorded an episode on TV's "Colour in Your Life", is published in International books and the Australian Artist magazine; her book "Landscape as Story" is available on Amazon and she has three instructional videos available through Pulsar Productions.

Details:

DVAA, Frog Hollow Centre for the Arts, 56 Woods Street. Darwin, NT

Time: 8:30 setup, 9:00 start to 4:00pm

Cost: 2 day workshop is \$180 for PSA members (\$220 non-members). Materials list available on website.

To book this workshop go to <https://ozpastels.com.au/events/category/workshops/workshops-darwin/>

For more information contact: Helena Gibbons, M: 0407252030. Email: helenag_em@bigpond.com

Plein-air Painting with the best of both worlds

Half day in and half day out of the studio

Karol Oakley 2 Day Workshop

Queen Alexandra Home, Brisbane

Sat 20th & Sun 21st October 2018

What you will learn

Techniques and tips for pastel painting water and the landscape

Using pastel to glaze colours for luminosity/building up a painting so it glows

Using planning methods to get the most from your reference material



About your Tutor

Karol Oakley is a very experienced tutor, who generously shares what she knows and loves about pastels and painting. Her workshops are structured to help those new to pastels or wanting to further develop their skills and confidence.

Karol's workshops are informative and fun, with the often heard comment of "Oh I learnt so much". Tutoring is with step by step demonstration, explanations, and discussion with equal time individual help.

View her work at www.oakleyfineart.com



Karol Oakley is a Master Pastellist of the Pastel Society of Australia Inc. and the Pastellist of the Year 2014/15. There are pastel features and articles in Australian Artist magazine of Karol's paintings.

Details:

Queen Alexandra Home Community Centre, 347 Old Cleveland Road, Cooperoo, QUEENSLAND 4151 Australia

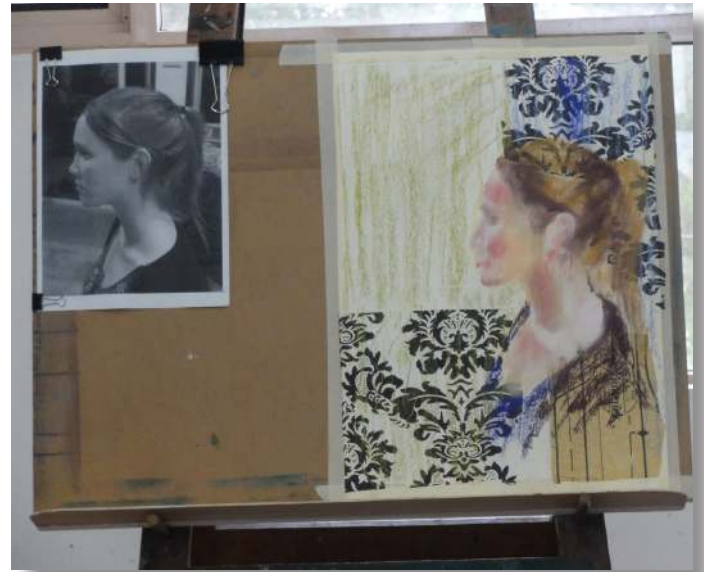
Time: 8:30 setup, 9:00 start to 4:00pm

Cost: 2 day workshop is \$140 for PSA members (\$180 non-members). Materials list available on website.

More details contact Lynette Ansari: workshopsozpastels@gmail.com

Gold Coast Demonstration Report July 2018
“Portraits over made background” with Tricia Reust.

Photos supplied by Fran Fitzgerald



Sunshine Coast Demonstration Report April 2018
Christine Clark – “Creating Dynamic Design in your paintings using NOTAN”

Photos and report by Lynne Coombs

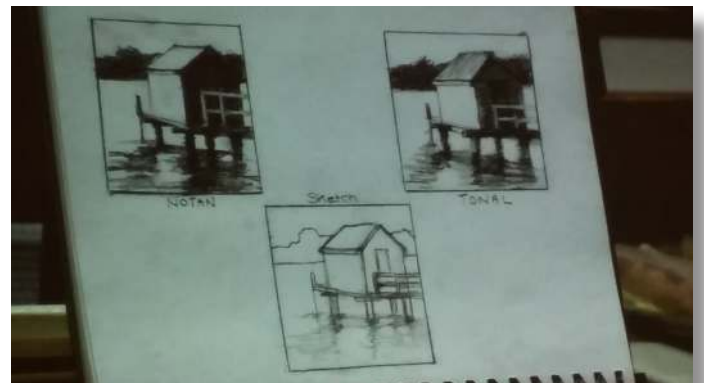
NOTAN is a Japanese word meaning “light-dark balance” using black and white.

POWER OF NOTAN: is that the artist is the true composer of their composition, simplifying and arranging the design of shapes and patterns to create a dynamic painting. This is a useful tool for artists

Christine demonstrated how the NOTAN was used in conjunction with other preliminary thumbnails doing a sketch, a value study and a NOTAN study.

This three-step process helps the artist to analyse a picture into an abstract pattern and shape – a defining tool for good composition.

- DYNAMIC process converting colour into black and white – different from tone or value.
- Important to do thumbnail sketches
- Different from tone or value sketches – NOTAN just black and white shapes and patterns.
- NOTAN is a tool to help you simplify.



The idea worked its way into art education following a book written by American artist and educator Arthur Wesley Dow in 1899. Teachers were educated in how to teach this concept using exercises that explored creating compositions using the idea of NOTAN - The underlying abstract, pattern and shapes that define a composition are not always obvious.

NOTAN breaks down the information (elements of all shapes and sizes, many gradations of tone, colour and an abundance of colour – all distracting) to the core structure of composition.

This flat and abstract design Notation is uniquely suited for expressing a composition when a design is expressed in such simplified terms, compositional energies like dominance, recessive weight, movement and balance become easier to see.

A NOTAN is not a value study mapping part of the

range of values we see. It is just black and white. It defines the patterns and shapes that form the basis of the composition. Many great paintings are built upon a solid NOTAN design. Paintings without this are still successful as art and design are far too diversified for any single theory to cover all compositional situations.

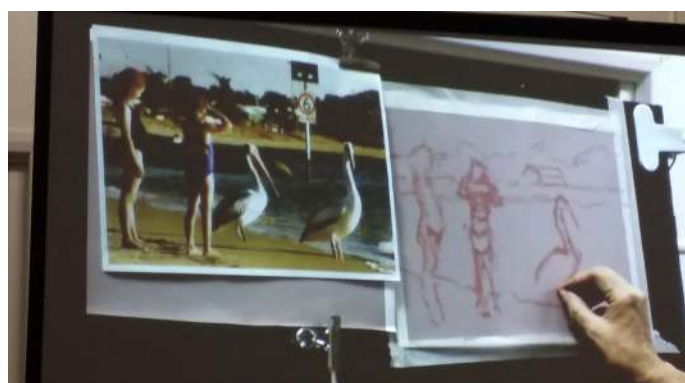
How to compose using NOTAN – it is not just about which shapes are included but the shape of those shapes and determined by whether the mid-tones will fall into black or white shape.

One could cut out black and white shapes from magazine – ask yourself how much black or white? After doing NOTAN sketch one can move either shapes to make a better composition. Helps us know ahead what shapes to paint before we paint.

Christine showed examples of how artists eg Gauguin, Monet and Degas have used this process.



Christine with her two sketches to decide best and work in progress.



Christine illustrating black and white sketch



Christine's example of using NOTAN in her painting "Two boys".

Margaret Turner 'Wattles' Work Shop

1st July 2018 by Pat Pennell



Using A/S colour fix Storm Blue paper & a light coloured pastel pencil for making an outline of the vase, level of table, then area's of the brightest wattle.

Our work shop had begun, with a very full class.

A white pastel pencil was used for all branches.

With the lightest of touch, Margaret, using a light yellow pastel, blocked in the prominent areas of wattle. B/umber followed for the next darker tone.

The vase was blocked in with dark blue for the shadow, sienna for the body.

Moving back to the wattle, Margaret's use of warmer yellows demonstrated how to create the shape of the wattle, lots of small curves and dots, with the lightest yellow for the final highlight.

While working on the flowers, we had to remember the leaves. The deeper shadows were not detailed, so as not to detract from the flowers, and using the storm blue pastel increasing the negative areas of the back ground.



The table was mid tone wood, which was reflecting in the blue glass vase, so our vase became very coppery looking.

The fallen wattle was to become one of the eye catching areas, a skill which Margaret has mastered. To achieve this was a challenge to follow.

Thank You Margaret, it was a very informative workshop, & we all enjoyed the day.



ART COMPETITIONS

2018 PSA Annual Exhibition and Alexandra Awards

Wednesday 12th September - Sunday 16th September
 Caloundra BreakFree Resort Conference Centre

**Close date:
 Friday 31st
 August
 2018**

Find entry forms on the website: ozpastels.com.au

See page 7 of this newsletter for the details

Queensland Regional Art Awards 2018

The theme this year is Wanderlust:

“From dirt roads to rock pools, luscious rainforests to local festivals, Queensland is a state that inspires exploration. It’s full of diverse personalities, local legends and hidden gems valued by tourists and locals alike. Artists are asked to embrace a spirit of adventure to discover something unique about their own community or one that they visit within the state.”

We can’t wait to see what regional and remote Queensland artists come up with this year!
 Get the details here <https://flyingarts.org.au/e.../queensland-regional-art-awards/>

ALEXANDRA AWARD

(for those who have never won a first prize for any pastel painting in any exhibition or show, open only to PSA members)

Two categories :

Set Subject “I Love It”

Set Subject “Caught my Eye”

Prizes for each category 1st \$500, 2nd \$300, 3rd \$200

So better get painting for this competition IT is going to be brilliant!

Thank you!
 Thank you! We extend a heart-felt thank you to Barbara Alexandra for her continuous donations of prize money for our annual Alexandra Awards.

SEPTEMBER

The September Competition has been postponed due to the Pastel Expo, so we will run it in October. Stay tuned for details.

For more info contact:
 Hettie Rowley
 0406180121
competitions.psa@gmail.com



The Pastel Society of Australia
invites you to the

2018

PSA Annual Exhibition and Alexandra Awards

Wednesday 11th September - Sunday 16th September
10am - 4pm daily

Caloundra BreakFree Resort Conference Centre

Entry Open to:

PSA Members (\$20 per painting - limit 3)

non-PSA Members (\$30 per painting - limit 1)

Categories:

People or Animals

Scapes

Still Life

The Pastel Society of Australia annual awards exhibition will be held at the BreakFree Resort, Caloundra from the 12th to the 16th of September 2018.

This exhibition will encompass the Annual Awards which is open to all members of our Society and the Alexandra Awards which is for members only who have never won a first prize award in any competition with a pastel painting. Non-members are invited to exhibit one artwork in the Annual Awards category.

The exhibition will give our Society the opportunity to showcase the exquisite qualities of the pastel medium in paintings of established genre.



Judging by International Renowned Artist Liz Haywood-Sullivan and Michael Hawker, curator Australian Art, Queensland Art Gallery.

Entry details: <http://ozpastels.com.au/event/psa-annual-awards-exhibition/>
Proudly run concurrently with the 2018 Inaugural Pastel Expo

Entry by gold coin donation - everyone welcome

Thanks to the Friends of the Gallery, Caloundra for their support

**Close date:
Friday 31st
August
2018**

PSA ANNUAL AWARDS 2018

For more information or to enter online, see the PSA web site: www.ozpastels.com.au

Or Email: reust@powerup.com.au Or Contact PSA Exhibition Coordinator

Tricia (07) 3889 4619

Hard copy entry forms can be handed in with payment at any PSA meeting or posted.

Please read the Conditions of Entry in order to assure acceptance of your work.

✂-----

Entry Form

The Pastel Society of Australia Annual Awards 2018

Name: _____

Address: _____

Phone: _____

Email: _____

PSA Members may enter up to three works and must each be in different categories (People/Animals, Scapes and Still Life), including entries in the Alexandra Awards (Section 1- 'I Love It'; Section 2- 'Caught My Eye'). PSA members who have never won a first prize award in any competition with a pastel may enter the Alexandra Awards. Non-PSA members may enter only one work.

All works are to be for sale and there is a 30% commission to the PSA on sales.

Title: _____

Section: _____

Price: _____

Size (including frame): _____ (cm) High X _____ (cm) Wide

Title: _____

Section: _____

Price: _____

Size (including frame): _____ (cm) High X _____ (cm) Wide

Title: _____

Section: _____

Price: _____

Size (including frame): _____ (cm) High X _____ (cm) Wide

Mail to: PSA Exhibition Coordinator
 C/- 168 King Street
 Clontarf Qld 4019

Checklist (please tick):

- Entry fee enclosed - \$20 per painting PSA members (\$30 for non-members 1 painting only)
- Repacking fee of \$10 enclosed if applicable.

(Please Make cheques payable to The Pastel Society of Australia Inc.)

Return of paintings:

- Personal pick up
- Courier
- Freight

- I have nominated paintings for the Alexandra Award

I am Registered for GST **Yes / No**

I have an ABN Yes/No If yes, it is: _____

I pursue my art in the nature of a hobby: **Yes / No**

I have read, and agree to abide by the Conditions of Entry. By signing this form, I attest to the facts that my entry is my own original work, was completed in the last two years, has not previously won an award, and consists of pastel, all in accordance with the Conditions.

Name (Please Print): _____

Signature: _____ Date: ___/___/___

Total Amount Payable: \$ _____

Diary of Dates –

- Entry form & fees in by **31 Aug** – by mail, hand, or on line. Please remember to photograph your unframed painting.
- Exhibit delivery by freight by **7th Sept** to 168 King St., Clontarf, Qld 4019.
- Exhibit Delivery in person: 8.30am - 10.30am, **Tuesday 11th Sept** to Breakfree Resort Conference Room, 100 Bulcock Street, Caloundra.
- Presentation of Awards Saturday evening **15th Sept** at Breakfree Resort Conference Centre.
- Close of Exhibition: Sunday **16th Sept** 3pm. Collection of works after 3pm and until 5pm Sunday.

The Pastel Society of Australia Inc thanks you for your participation



"The Pastel Society of Australia Annual Exhibition 2018"

Encompassing both Annual and Alexandra Awards

12th Sept to 16th Sept 2018

Conditions of Entry

1. All entries are to be pastel (soft). Works may be on any surface including canvas, and mixed media is acceptable with at least 75% pastel on top.
2. Entries must be the original work of the entrant, which precludes works completed in workshops or under tutelage, and/or copied from any source other than that belonging to the entrant. Source material to be available if requested. Entries must have been completed in the last two years and must not have previously won an award with the PSA.
3. Maximum Size of finished painting: **550mm x 750mm** (excluding frame)
4. Maximum of **3 entries/member – in different categories** . **Non-PSA Members** maximum **1 entry**. All PSA members must be financial by 31st August 2018.
5. Categories for 2018: People/Animals
 Scapes
 Still Life.

All paintings can be traditional or contemporary in style.

Prizes in each category: 1st \$1000
 2nd \$500
 3rd \$300.

The Pastellist of the Year (\$200) is only for PSA members and will be chosen from the three 1st Place awards in each category.

6. **Alexandra Award** entries are invited for **PSA members only** who have never won a first prize award in any competition (PSA or other) with a pastel painting. Members may enter both Sections and the General Competition (3 paintings in total)
Section 1- 'I Love It'
Prizes 1st \$600 2nd \$200 3rd \$100
Section 2 – 'Caught my Eye'
Prizes 1st \$600 2nd \$200 3rd \$100
7. **Peoples' Choice Award** (\$200 Gift Certificate) Arthouse Northside, Deagon. Chosen by members of the public, this gift certificate can be accessed on line as well as in person at the art store.
8. Members Entry fee of **\$20 for each painting (max 3)**. Non Members **\$30 (one only)**.
9. All works are to be for sale and there is a 30% commission on sales.
10. Media reproduction of entries is allowed for promotional purposes by PSA.
11. Online entries are available via website www.ozpastels.com.au with payment via direct deposit or Pay Pal. OR manual entry forms can be returned via post or handed in with payment at a general meeting.

12. All Entry forms to be completed with payment of entry fees by **Friday 31st August 2018** or post your completed entry form with cheque to the PSA Exhibition Coordinator Tricia Reust 168 King Street, Clontarf, Qld 4019, Australia. **NO LATE ENTRIES ACCEPTED**
13. All works to be clearly **labeled** on the back with artist's name, address, phone, title and price.
14. All works are to be ready for display with hanging wire or cord and "D" rings firmly attached. Gallery specifics requires additional "D" hooks to be placed 75mm from the top of frame with the "D" facing upwards. **This is essential.**
15. All works will be seen by the judges, though all works may not be hung if available space is restricted. The judges' decisions are final.
16. All care will be taken in storing and hanging of art but no responsibility will be taken by the PSA, or those associated with the Breakfree Resort.
17. Exhibition will be held at **Breakfree Resort Conference Room, Caloundra, Qld, Australia. Open daily and gold coin donation requested.**
18. Receipt of works by hand at **Breakfree Resort Conference Room, 100 Bulcock Street, Caloundra** from **8.30am – 10.30am Tuesday 11th September.**
19. Post courier/freight works, to PSA Exhibition Coordinator Tricia Reust 168 King Street, Clontarf, Qld 4019 Australia.
20. All works being couriered must be received by Friday 7th Sept. Under no circumstances will the PSA incur courier/freight costs. All freight arrangements and costs must be organized and prepaid by the entrant. Payment of a \$10 repacking fee is required for the PSA to repackage your artworks, and packaging must be of a standard to enable safe repackaging.
21. Personal **collection of sold and unsold works** will be after **3pm and until 5pm Sunday 16th September.** **No paintings may be removed before this date and time.** There is no opportunity for storage, so any works remaining after this time will incur a significant PSA storage fee and/or be discarded. Freight works will be returned after this date.
22. All proceeds from sales and prizes will be paid by direct deposit into your nominated bank account within a month after the exhibition closes.

Diary of Dates -

- Entry form & fees in by **31 Aug** – by mail, hand, or on line.
- Exhibit delivery by freight by **7th Sept** to 168 King St., Clontarf, Qld 4019.
- Exhibit Delivery in person: 8.30am - 10.30am, **Tuesday 11th Sept** to Breakfree Resort Conference Room 100 Bulcock Street, Caloundra.
- Presentation of Awards Saturday evening **15th Sept** at PSA EXPO, Caloundra Events Centre. All participants, members and friends are welcome. "Gold Coin" donation requested.
- Close of Exhibition: Sunday **16th Sept** 3pm. Collection of works after 3pm and until 5pm Sunday.

Thanks to the Friends of the Gallery Caloundra for their support



The largest range of soft pastels and specialty pastel papers in Australia.

Pastels

- Art Spectrum
- Blue Earth
- Conte
- Generals
- Girault
- Holbein
- NuPastel
- Pan Pastels
- Rembrandt
- Schmincke
- Sennelier
- Unison

Papers

- Ampersand Pastel Board
- Colourfix
- Colourfix Smooth
- Fisher 400
- Hahnamuhle Velour
- Hahnamuhle Pastelfix
- Mi-Teintes
- Mi-Teintes TEX
- Pastelmat
- Sennelier Pastel Card
- Sennelier Velvet and Felt
- UART Premium

- ▶ We deliver Australia wide as well as internationally.
- ▶ We provide value pricing everyday and run monthly specials.
- ▶ We are a unique family run business with friendly service and help.
- ▶ Our range only consists of artist quality materials. New items are constantly sourced.

www.softpastels.com.au

OPENING HOURS

Monday - Friday 6:00am to 6:00pm
Saturday 6:00am to 2:00pm

259 Bruncker Road, Adamstown NSW 2289

Phone: **02 4957 1050**

Email: colours@softpastels.com.au



Thank you to all the members who have registered for our Expo 2018. We have started a facebook group page. If you would like to keep up to date and follow what is happening or ask questions - join the group. A great way to share the experience. Search for Australian Pastel Expo

For all the details visit

<https://www.australianpastelexpo.com.au/>



EXPO 2018 Registration Prize

Many thanks to our wonderful sponsors for donating such an awesome prize valued at \$735.



2 x Large Pastelmat Pads

1 x Blue Earth Set of 28

Pack of 10 Uart Paper

1 x Giralt Set of 50



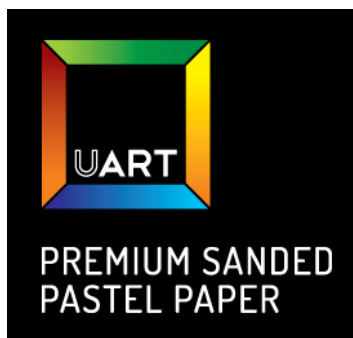
Winner must be present at the Expo to win.

Registration opens

for members on 22nd February at 9am

Non members on 24th February at 9am.

www.Australianpastelexpo.com.au



President

Suzanne Robinson 0429789266
PresidentOzpastels@gmail.com

Secretary

Kelcey Burman 0413027463
SecretaryOzpastels@gmail.com

Treasurer

Vanessa Thomas
treasurerozpastels@gmail.com

Vice President - Vacant

Committee Member

Terry Wilkinson 07 32076134
terrywilkinson@bigpond.com

Committee Member

Greg Steele 07 32617972
gregorymark57@outlook.com

Sub-committees

Public Officer
Gillian Collom
PublicOfficerOzpastels@gmail.com

Exhibition Coordinator

Hettie Rowley
competitions.psa@gmail.com

Membership Secretary

Vanessa Thomas
treasurerozpastels@gmail.com

Webmaster

Margaret Turner 07 3300 5340
webmaster@ozpastels.com.au

Webmaster Assistant - Vacant

Communications and Advertising

Laurel Donaldson
commsozpastels@gmail.com

Promotion Officer - Vacant

Newsletter Editor & Design

Jeanne Cotter 0413 374 634
jeannecotterbrisbane@gmail.com

Newsletter Team

(postal/mail out)
Margaret Ollerenshaw 0435413726

Library

Greg Steele 07 32617972
gregorymarj57@outlook.com

Competition Coordinator

Hettie Rowley 0406180121
competitions.psa@gmail.com

Workshop Coordinator - Vacant

Gold Coast: Louise Corke 0419644665,
lou2345@bigpond.net.au

Sunshine Coast: Pat Pennell 0447971369
kppennell@bigpond.com

Master Pastellist Submissions

Penelope Gilbert-Ng 0403882079
p_gilbertng@optusnet.com.au

BVAC Liaison Officer - Vacant

Expo Coordinator

Kelcey Burman
Pastelexpo@gmail.com
Expo team: Tricia Taylor, Betty Sutton, Penelope Gilbert-Ng, Karol Oakley, Louise Corke, Joanne Cotton, Vanessa Thomas, Terri Giesen, Sally Thomson.

Expo Event Volunteer Coordinator

Betty Sutton 0417672771
betty.sutton@bigpond.com

Meeting Support Team

Margaret Ollerenshaw & Gwen Thiesfield

Meeting Demonstration Coordinator

Brisbane: Margaret Van Maanen 0423117730
Gold Coast: Louise Corke 0419644665
Sunshine Coast: Sally Thomson 0403017832

Meeting Reception

Terry Wilkinson 0419799286
Assistant
Gail Lusted 0422217582

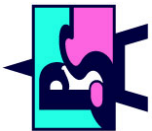


AUSTRALIAN PASTEL EXPO 2018 Hosted by Pastel Society of Australia Inc.
australianpastelexpo.com.au pastelexpo@gmail.com

Wednesday 12th September Registration opens after 3:30pm in the afternoon with a welcome address and drinks from 5:00pm to 6:30pm to celebrate the official opening of the Expo. A social time to come and meet with the other students and tutors and see our tutors exhibition.
Thursday 13th September 2018

Tutor	Workshop/Demo	Code	Date	Time	Theme
Leoni Duff	Workshop	WT1	Thursday 13th	9am-4pm	LIMITED NUMBERS Still Life: Style Story and Technique of the Masters
Liz Haywood Sullivan	Workshop	WT2	Thursday 13th	9am-4pm	FULL Creating Powerful Seascapes
Lyn Diefenbach	Workshop	WT3	Thursday 13th	9am-4pm	FULL Portrait of the Floral
Maxine Thompson	Workshop	WT4	Thursday 13th	9am-4pm	Animals a Character Study
Pauline Adair	Workshop	WT5	Thursday 13th	9am-4pm	FULL Figure Studies in Charcoal and Pastel
Penelope Gilbert Ng	Workshop	WT6	Thursday 13th	9am-4pm	Children at Play Tell your own story
Ross Paterson	Workshop	WT7	Thursday 13th	9am-4pm	FULL Landscape with Animals
Betty Sutton	1/2 day Workshop	WT8A	Thursday 13th	9am-12noon	Discovering the delights of Pastel
Joan Macnaught	1/2 day Workshop	WT8B	Thursday 13th	1pm-4pm	CLOSED Make the Paper work for you
Karol Oakley	1/2 day Workshop	WT9B	Thursday 13th	1pm-4pm	Plein Air - Boardwalk Caloundra
Christine Clark	demo	DTA1	Thursday 13th	9am-10:30am	Seascape Energy and mood
Chris Blake	demo	DTB1	Thursday 13th	9am-10:30am	Putting Life into the Town Scape
Karol Oakley	demo	DTC1	Thursday 13th	9am-10:30am	Plein Air Painting Explained
Christine Clark	demo	DTA2	Thursday 13th	11am-12:30am	Impressionistic Landscape
Chris Blake	demo	DTB2	Thursday 13th	11am-12:30am	Equine Madness
Sandra Temple	demo	DTC2	Thursday 13th	11am-12:30am	Animals
Betty Sutton	demo	DTA3	Thursday 13th	2pm-3:30pm	Tips and Techniques learn to paint with pastel
Hettie Rowley	demo	DTB3	Thursday 13th	2pm-3:30pm	Realistic hair and fur on Animals
Anne Yang	demo	DTC3	Thursday 13th	2pm-3:30pm	Painting Still Water
Paint Around	Demo	Main Demo	Thursday 13th	5pm-6:30pm	5 Masters in round robin with Auction.

This schedule is accurate at time of printing but subject to last minute changes as we are still a long way. If classes do not fill we reserve the right to cancel. Early Evening events 5pm- 6:30pm will be announced closer to the Expo and will be available for all to attend. Eg paint rounds. Q&A sessions etc.



AUSTRALIAN PASTEL EXPO 2018 Hosted by Pastel Society of Australia Inc.
 australiapastelexpo.com.au pastelexpo@gmail.com

Friday 14th September 2018

Tutor	Workshop/Demo	Code	Date	Time	Theme
Max Wilks	Workshop	WF1	Friday 14th	9am-4pm	FULL Landscapes
Karol Oakley	Workshop	WF2	Friday 14th	9am-4pm	Landscape with Water
Leoni Duff	Workshop	WF3	Friday 14th	9am-4pm	Figures Seeing Beauty Gesture and Design in Painting the Costumed Figure from Life.
Liz Haywood Sullivan	Workshop	WF4	Friday 14th	9am-4pm	FULL Capturing the Natural Landscape
Lyn Diefenbach	Workshop	WF5	Friday 14th	9am-4pm	FULL Portraits – Building the Illusion of Reality
Lyn Mellady	Workshop	WF6	Friday 14th	9am-4pm	FULL Waves, Rocks and Shoreline Impressionist Realism
Maxine Thompson	Workshop	WF7	Friday 14th	9am-4pm	CLOSED Landscape What to Leave Out
David Newman White	Workshop	WF8	Friday 14th	9am-4pm	Pastel Pencil Portrait using Mixed Media
Tricia Taylor	1/2 day Workshop	WF9A	Friday 14th	9am-12noon	plein Air - Capturing the Ocean Plein air
Ross Paterson	1/2 day Workshop	WF9B	Friday 14th	1pm-4pm	Plein air - Urban Landscape
Hettie Rowley	demo	DFA1	Friday 14th	9am-10:30am	Portrait using Wax Ink and Pastel
Louise Corke	demo	DFB1	Friday 14th	9am-10:30am	Technical Creating Custom Alternate Surfaces for Pastel
Louise Corke	demo	DFA2	Friday 14th	11am-12:30am	Technical Moving Water in a Rocky Environment Using a Wet Technique
Sandra Temple	demo	DFB2	Friday 14th	11am-12:30am	Animals
Tricia Reust	demo	DFC2	Friday 14th	11am-12:30am	Pastel On Canvas
Robyn Receveur	demo	DFA3	Friday 14th	2pm-3:30pm	Portrait Tips and Tricks
Pan Pastels Artist	demo	DFB3B	Friday 14th	2pm-3:30pm	TBA
Joan Macnaught	demo	DFC3	Friday 14th	2pm-3:30pm	Country Clobber
Liz Hayward Sullivan	Demo	Main demo	Friday 14th	5pm-6:30	The Dramatic Sky in Pastel

This schedule is accurate at time of printing but subject to last minute changes as we are still a long way. If classes do not fill we reserve the right to cancel. Early Evening events 5pm- 6:30pm will be announced closer to the Expo and will be available for all to attend. Eg paint rounds. Q&A sessions etc.



AUSTRALIAN PASTEL EXPO 2018 Hosted by Pastel Society of Australia Inc.
australianpastelexpo.com.au pastelexpo@gmail.com



Saturday 15th September 2018

Tutor	Workshop/Demo	Code	Date	Time	Theme
Christine Clark	Workshop	WS1	Saturday 15th	9am-4pm	Fantastic Flowers Impressionistic Style
Leoni Duff	Workshop	WS2	Saturday 15th	9am-4pm	FULL Composing Powerful Figure Paintings from Photographic Reference.
Karol Oakley	Workshop	WS3	Saturday 15th	9am-4pm	CLOSED Interpretive Pastel Mixed Media
Liz Haywood Sullivan	Workshop	WS4	Saturday 15th	9am-4pm	FULL Working with Architecture in the Landscape
Louise Corke	Workshop	WS5	Saturday 15th	9am-4pm	Portraits Less is More
Penelope Gilbert Ng	Workshop	WS6	Saturday 15th	9am-4pm	Conceptual Abstract
Tricia Taylor	Workshop	WS7	Saturday 15th	9am-4pm	FULL Shorelines - How to Paint a Crashing Wave onto Wet Sand
Anne Yang	Workshop	WS8	Saturday 15th	9am-4pm	Still Waters Run Deep
Lyn Mellady	1/2 day Workshop	WS9A	Saturday 15th	9am-12noon	FULL Plein air See it Love it Do it
Max Wilks	1/2 day Workshop	WS9B	Saturday 15th	1pm-4pm	FULL Plein air
Tricia Reust	demo	DSA3	Saturday 15th	9am-10:30am	Technical How to Use Art Spectrum Primer
Australian Artist Magazine	demo	DSB1AA	Saturday 15th	9am-10:30am	How to photograph your work and Q&A session.
Maxine Thompson	demo	DSC1	Saturday 15th	9am-10:30am	Portraits What Were They Thinking?
Maxine Thompson	demo	DSA2	Saturday 15th	11am-12:30am	Animals Character Study Leave Room for Interpretation
Mako Waki	demo	DSB2	Saturday 15th	11am-12:30am	CLOSED Juxtaposition Fish and Floral
Tricia Reust	demo	DSC2	Saturday 15th	11am-12:30am	Special New Pastel Work Over Old
Pauline Adair	demo	DSB1PA	Saturday 15th	2pm-3:30pm	The Figure in Pastel
Lyn Mellady	demo	DSB3	Saturday 15th	2pm-3:30pm	Still Water Above and Below, We See it All Impressionist Realism
Ross Paterson	demo	DSC3	Saturday 15th	2pm-3:30pm	Technical Explanation of Colour/Tone in a Landscape

This schedule is accurate at time of printing but subject to last minute changes as we are still a long way. If classes do not fill we reserve the right to cancel. Early Evening events 5pm- 6:30pm will be announced closer to the Expo and will be available for all to attend. Eg paint rounds. Q& A sessions etc.



AUSTRALIAN PASTEL EXPO 2018 Hosted by Pastel Society of Australia Inc.
australianpastelexpo.com.au pastelexpo@gmail.com

Sunday 16th September 2018

Tutor	Workshop/Demo	Code	Date	Time	Theme
Chris Blake	Workshop	WX1	Sunday 16th	9am-4pm	Marine Reflections Workshop
Christine Clark	Workshop	WX2	Sunday 16th	9am-4pm	Portraiture in Mixed Media Pastel and Charcoal Wet With Metho
Joan Macnaught	Workshop	WX3	Sunday 16th	9am-4pm	CLOSED Fun with Aussie Flowers
Louise Corke	Workshop	WX4	Sunday 16th	9am-4pm	CLOSED Still Life Colours That Flow in the Rivers of Light and Shadow
Ross Paterson	Workshop	WX5	Sunday 16th	9am-4pm	CLOSED Urbanscape
Tricia Reust	Workshop	WX6	Sunday 16th	9am-4pm	Painting and Retrieving Papers for Pastel
Sandra Temple	Workshop	WX7	Sunday 16th	9am-4pm	Animals in Pastel
Karol Oakley	1/2 day Workshop	WX8A	Sunday 16th	9am-12noon	Urban Planning
Tricia Taylor	1/2 day Workshop	WX8B	Sunday 16th	1pm-4pm	Colour mixing - Limiting Your Pallet
Max Wilks	1/2 day Workshop	WX9A	Sunday 16th	9am-12noon	Plein Air
					No Plein air Session this Afternoon
David Newman White	Double demo	DXA1	Sunday 16th	9am-12:30am	Portrait using Mixed Media including Oil Pastel
Penelope Gilbert Ng	demo	DXB1	Sunday 16th	9am-10:30am	Landscape What is the Story
Tricia Taylor	demo	DXC1	Sunday 16th	9am-10:30am	Oceans Using Watercolour Underpainting
Penelope Gilbert Ng	demo	DXB2	Sunday 16th	11am-12:30am	Portrait Simplify - Less is best
Maxine Thompson	demo	DXC2	Sunday 16th	11am-12:30am	Still Life using Less for Greater Effect
Anne Yang	demo	DXA3	Sunday 16th	2pm-3:30pm	Flower Portrait with Luminosity
Lyn Mellady	demo	DXB3	Sunday 16th	2pm-3:30pm	Seascape Energy Moving in Light Impressionist Realism
Pauline Adair	demo	DXC3	Sunday 16th	2pm-3:30pm	The figure Using Watercolour and Pastel

This schedule is accurate at time of printing but subject to last minute changes as we are still a long way. If classes do not fill we reserve the right to cancel. Early Evening events 5pm- 6:30pm will be announced closer to the Expo and will be available for all to attend. Eg paint rounds. Q&A sessions etc.

The newsletter will be released bi-monthly. The next newsletter is due out in **OCTOBER 2018**.

CLOSING DATE: Closing Date for October 2018 Newsletter is the 29th of September 2018.

Articles submitted AFTER this date WILL NOT BE ACCEPTED.

SEND TO: All submissions are to be sent to JEANNE COTTER at jeannecotterbrisbane@gmail.com

FORMAT: The preferred format for written articles is Microsoft Word sent as an attachment to your email. Articles sent from an iPad or in the body of an email are not acceptable. Please send photos as jpg attachments to your email, not embedded in an email, and title each photo with your name and a number (eg: janesmith001.jpg) rather than send as a file number (eg: 2200957694.jpg). Please make ALL reports in text font ARIAL Size 11. Many thanks for your assistance.

YOUR NEWS: Please let us know of your pastel achievements. We want to celebrate with you!! The newsletter is a great way to let people know and to build your profile.

YOU CAN CONTRIBUTE: We'd love to hear about Workshops and Demonstrations that you've attended. Be willing to write up meeting demonstration and workshop reports and send to the Newsletter team ASAP - within a week of the event - (PLEASE not at the last minute). Many thanks.

CLOSING DATE: Closing Date for October 2018 Newsletter is the 29th of September 2018.

Thanks to our Sponsors

GWEN THIESFIELD



Barbara Alexandra

