

# The Pastellist

The Pastel Society of Australia Inc.

Established by John and Ivy Jeffrey in 1985



## CONTENTS

President's Report.....	2
Wins, News and What's On.....	3
PSA Meeting Schedule.....	4 - 5
Monthly Demo Artists.....	6 - 7
Demo Reports .....	8 - 13
Stanthorpe Paintout.....	14
Annual Awards Exhibition .....	15
EXPO 2022.....	16
Featured EXPO Tutors .....	17
EXPO SCHEDULE .....	18 - 21
Workshops.....	22
COVID POLICY .....	23
Book Review.....	24
Annual Awards Exhibition Conditions of Entry .....	25 - 29
Thanks to our Sponsors .....	30
Committee Members .....	31
Publish your artwork online .....	32
Newsletter Submissions & Advertising ...	33

Welcome to the April 2022 PSA Newsletter. It's shaping up to be a wonderful year with workshops and demonstrations, the 2022 Annual Awards Exhibition and of course, our second Australian Pastel Expo.

Inside you'll find the EXPO Schedule and details of workshops and demos so if you haven't already booked your ticket, don't delay, because EXPO workshops are filling fast! You'll also find details about the Annual Exhibition categories and prizes. Now is the time to begin working on your submissions. Entries open 1st April 2022 and close on Friday 8th July 2022.

Enjoy this newsletter and don't forget to take some time to explore our wonderful website, where you'll find all the information you need for everything that's happening at the Pastel Society of Australia.

Kind Regards  
*Jeanne Cotter*  
Newsletter Editor



## Presidents Report, April 2022

Congratulations to the members who consistently prepare and organize the PSA meetings, including the monthly Zoom. It has been a rocky start to the year with the various cancellations, and we are grateful for their commitment and generosity.

The Committee is presently grappling with the issue of the overload of work being undertaken by Vanessa and Kelcey who are remarkable and without whom our Society would not run. The Committee is looking at reviving lapsed areas of responsibility such as Assistant Treasurer; Assistant Secretary or Minutes Secretary; Membership Secretary; Zoom Host; Website Manager; Coordinator of Demonstration Reports etc. This will entail reworking the role descriptions to include service to the increased membership outside of the Queensland area and the

introduction of the monthly Zoom meetings. It is unacceptable for Kelcey and Vanessa to be undertaking all the tasks that they presently perform.

The Conditions and information (times/dates/address) concerning the Annual Awards for this year are currently available on the website for your reading and to enable you to prepare. The Awards will be held in conjunction with EXPO this year and the entry form will be available soon.

If you are driving north/west in the coming weeks, call in to the Gin Gin Regional Art Gallery and visit the PSA Members' exhibition.

The EXPO committee is working hard to accommodate the bookings and the organisation of such a huge event. We are lucky indeed to have such a talented and hardworking team as members of the PSA.

I hope you have recovered from the flooding if you were affected and that you are managing to avoid Covid. At this time when our world seems to be off its axis somehow I hope you have either experienced the aid of neighbours and community or have been in the lucky position to have offered aid yourself. We are fortunate to be able to promote and create our pastel art which lifts our spirits.

Sincerely,

*Tricia*

Tricia Reust, PSA President

***Set Subject for Zoom Competitions -***

April: Blue and Green should never be seen (deferred to April due to the flood disaster in March)

June: (technical) Tonal contrast

October: Surface interest - Textures

The monthly zoom opens at 5.30pm Brisbane time for a start at 6.00pm. The link is the same every month:

<https://us02web.zoom.us/j/9228254988>

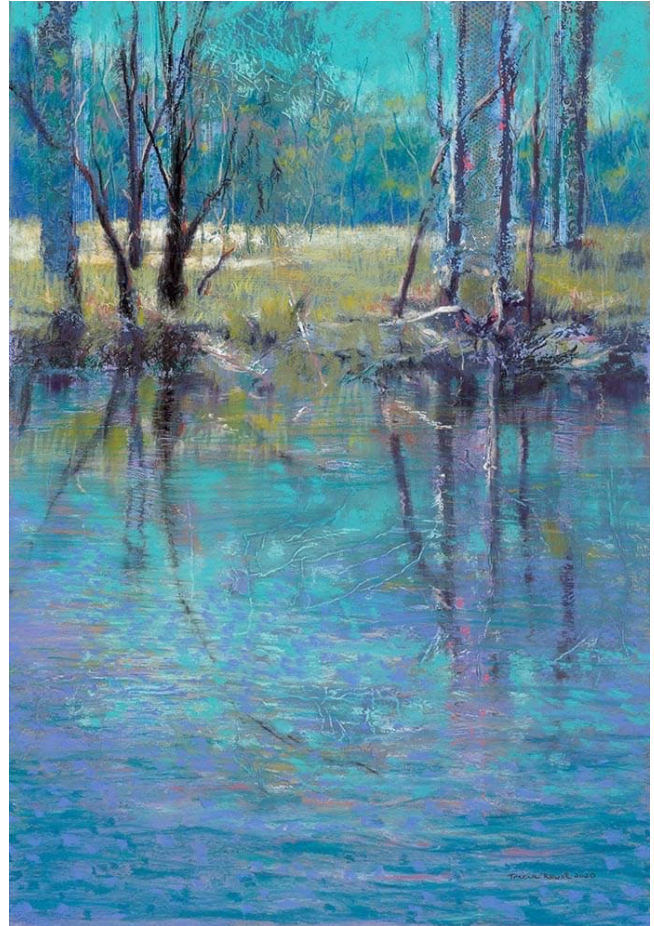
Reminders are sent by email and SIGNAL.

Each entry will be judged by the guest demonstrator and you have a chance to win the following prizes:

General Members; \$25 voucher from Arthouse Northside

MP/AP's; \$15 cash prize.

Winners will be announced at the end of the meeting. These paintings DO NOT have to be framed.



***Tricia Reust was filmed for Colour In Your Life in 2012, and again in 2019. Find out what has happened for her since, in this interview with Graeme!***

Tricia Reust is a vibrant visual artist who uses colour without any limitations, letting the idea and the form take shape; and then building a narrative as part of her approach. Tricia has an infectious enthusiasm for life and the artistic process and enjoys being able to pass on the great information she has learnt over the years.

Tricia will be teaching workshops at this year's Pastel EXPO, so do check out this interview and have a look at her website to give you an idea of what she teaches. Wonderful stuff!

**View the interview** here on Youtube at Colour in your life. : <https://www.youtube.com/watch?v=hTS4AtM7pcs>

View Tricia's website here: <https://triciareust.com.au/>



***Join us on Facebook!***

Have you liked us at the **Ozpastels** Facebook page?

There you can keep up to date with meetings, workshops and announcements.

Log into your Facebook account and search for **Ozpastels**, or go to <https://www.facebook.com/OzPastels/>

## PSA Meeting Schedule 2022

DATE	TIME	LOCATION	DEMO ARTIST	SUBJECT
05 Apr 2022	6pm - 9pm	BRISBANE - Mount Gravatt Showgrounds	Tricia Reust	Still Life over Collage
12 Apr 2022	5.30-7.30pm	ZOOM	Mark Lutz	Presentation on Giclee reproductions
09 Apr 2022	1.30 - 4.30pm	GOLD COAST - Mudgeeraba Old Post Office	Petronella van Leusden	Group Activity
19 Apr 2022	6pm - 9pm	SUNSHINE COAST - Buderim Craft Cottage	David Wells	Portraits
03 May 2022	6pm - 9pm	BRISBANE - Mount Gravatt Showgrounds	Chris Blake	Townscape with people
10 May	5.30-7.30pm	ZOOM	Leoni Duff	Creative charcoal and designing your painting
14 May 2022	2.30 - 5.30pm	GOLD COAST - Mudgeeraba, Old Post Office	Group Activity	TBA
17 May 2022	6pm - 9pm	SUNSHINE COAST - Buderim Craft Cottage	Group Activity	Bus trip to Maleny
07 Jun 2022	6pm - 9pm	BRISBANE - Mount Gravatt Showgrounds	Karol Oakley	TBA
14 Jun 2022	5.30-7.30pm	ZOOM	Lyn Mellady	Go with the flow
11 Jun 2022	2.30 - 5.30pm	GOLD COAST - Mudgeeraba, Old Post Office	Group Activity	Underpainting and textures
21 Jun 2022	6pm - 9pm	SUNSHINE COAST - Buderim Craft Cottage	Karol Oakley	En Plein Air
05 Jul 2022	6pm - 9pm	BRISBANE - Mount Gravatt Showgrounds	Chris Clark	TBA
12 Jul 2022	5.30-7.30pm	ZOOM	TBA	TBA
09 Jul 2022	2.30 - 5.30pm	GOLD COAST - Mudgeeraba, Old Post Office	No Meeting	No Meeting
19 Jul 2022	6pm - 9pm	SUNSHINE COAST - Buderim Craft Cottage	Ann Yang	TBA
02 Aug 2022	6pm - 9pm	BRISBANE - Mount Gravatt Showgrounds	TBA	TBA
09 Aug 2022	5.30-7.30pm	ZOOM	Stephie Clark	TBA
13 Aug 2022	1.30 - 4.30pm	GOLD COAST - Mudgeeraba, Old Post Office	Tricia Reust	Pastel on Canvas
16 Aug 2022	6pm - 9pm	SUNSHINE COAST - Buderim Craft Cottage	Group Activity	Interactive Still Life

## PSA Meeting Schedule 2022

06 Sep 2022	6pm - 9pm	BRISBANE - Mount Gravatt Showgrounds	No Meeting	
13 Sep 2022	5.30-7.30pm	ZOOM	Cathy van Ee	TBA
10 Sep 2022	1.30 - 4.30pm	GOLD COAST - Mudgeeraba, Old Post Office	Petronella van Leusden	Matching pastels by tonal value
20 Sep 2022	6pm - 9pm	SUNSHINE COAST - Buderim Craft Cottage	No meeting	
04 Oct 2022	6pm - 9pm	BRISBANE - Mount Gravatt Showgrounds	Louise Corke	TBA
11 Oct 2022	5.30-7.30pm	ZOOM	Desley Stewart	TBA
8 Oct 2022	1.30 - 4.30pm	GOLD COAST - Mudgeeraba, Old Post Office	Chris Blake	TBA
20 Sep 2022	6pm - 9pm	SUNSHINE COAST - Buderim Craft Cottage	Group Activity	Plein Air
01 Nov 2022	6pm - 9pm	BRISBANE - Mount Gravatt Showgrounds	Group Activity	Christmas Party
8 Nov 2022	5.30-7.30pm	ZOOM	TBA	TBA
12 Nov 2022	2.30 - 5.30pm	GOLD COAST - Mudgeeraba, Old Post Office	Group Activity	Christmas Party
15 Nov 2022	6pm - 9pm	SUNSHINE COAST - Buderim Craft Cottage	Group Activity	Christmas Party



*Ocean Splendour* by Master Pastellist Tricia Taylor

## Featured Demo Artist - Sunshine Coast David Wells

**Details:**

**Sunshine Coast Monthly Meeting**

**Tuesday 19th April 2022**

Arrive at 5.45pm for a 6pm start

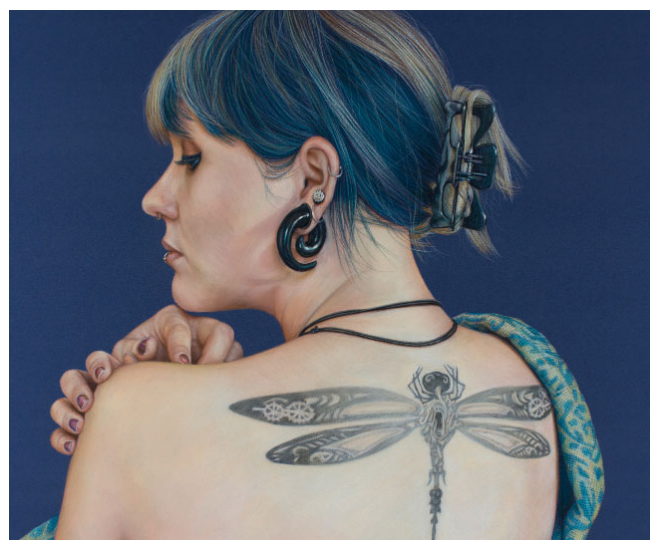
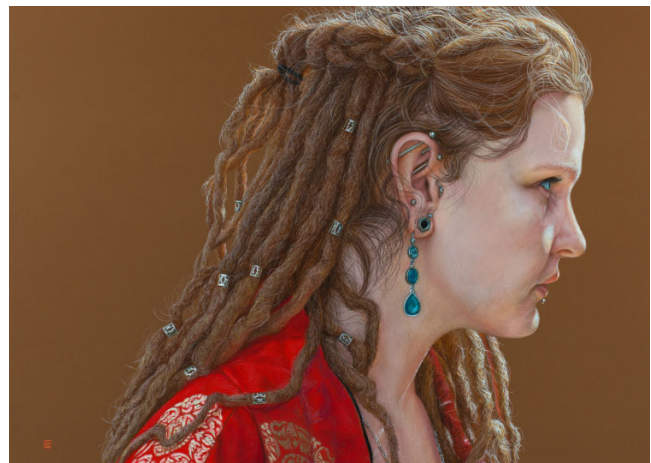
Craft Cottage,  
5 Main Rd Buderim, 4556.

Coordinator: Vanessa Thomas  
treasurerozpastels@gmail.com

Cost: Members \$5,  
Non-Members \$10

**David will demonstrate:**

- Pastel pencil Underpainting
- Flesh tones in soft pastels
- Techniques for hair
- Facial features and likeness
- Glazing/Scumbling final layers with pastel pencils.



David Wells was born 1977 into an artistic family.

He is an eclectic artist having worked professionally as an actor, graphic artist, web designer, circus and street performer, musician, children’s entertainer and visual artist.

He has exhibited extensively, and has been award over 30 prizes for his art.

His work has been regularly published in international journals, and has featured on the cover of both “The Artists Magazine” (2009) and “The Pastel Journal.” (2009 and 2014)

In 2014 his portrait of HRH Catherine Duchess of Cambridge, was accepted as a gift by the Royal Family and now hangs in the Royal Collection

*“I believe that a living person is more interesting than any artwork ever made; therefore, everyone is a masterpiece waiting to be painted.”*

## Featured Demo Artist - Gold Coast Petronella van Leusden

### Details:

#### Gold Coast Monthly Meeting

**Saturday 9th April 2022**

Arrive at 1.30pm for a 2pm start. Ends 4.30pm

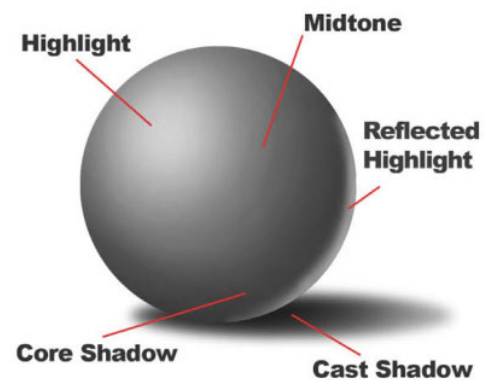
Old Post Office, 57 Railway Street,  
Mudgeeraba

Coordinator: RSVP to Petronella van  
Leusden [hello@Petronella.Gallery](mailto:hello@Petronella.Gallery)

Ph: 0407 963 773

Cost: Members \$5 cash  
Non-Members \$10 cash

#### Group Exercise



In this meeting we explore how to paint believable 3D objects.

The aim is to create the illusion of a three dimensional object on a flat two dimensional paper using charcoal or three shades of pastel. We will use observation to look at highlight, midtone, cast shadow, reflected light and core shadow in relation to the light source.

We will also look at the point of perspective compared to the horizon and observe how it alters what we see of the object that we are painting.

We provide small table easels and boards (29x38cm), light source and simple 3 D objects. There is a pastel set to use for people new to pastel. You are most welcome to bring your own 3D object.

#### Material list

- Please bring as many of the following things:
- Charcoal
- White cartridge paper
- Optional:
- Sanded pastel paper (any colour is fine): quarter of a big sheet or bigger
- Hard brush and kneadable rubber
- Towel to put your pastels on
- A range of soft pastels: Three pastels of the same colour but different values from dark to light, at least one light (whitish) and one dark (blackish) pastel.

Please make sure you have:

- Proof of immunisation required to enter the premises
- Mask: no mask = no entry, and they have to be worn correctly.
- Own cup to make tea or coffee

## Zoom Demo with Stephie Clark - February 2022

Report by Christine Leaming

Stephie Clark aims

1. To paint from dark to light
2. To paint out of focus first, then slowly bring more details in with hard and soft edges
3. The final strokes are left untouched to create a sense of depth to paint in colour and shapes then mould the colours into subjects

Tonight Stephie is painting a view of her garden featuring Echinacea, Stocks and Japanese Wind flowers.

It is painted on Pastelmat in Anthracite with a selection of hard and soft pastels including Sennelier, Schminke, Terry Ludwig and NuPastel.



### Background

Stephie uses three darks as her go to's.....Sennelier green 179, dark blue 463 and Terry Ludwig Eggplant.

She is inspired by 17th century Dutch artists who used the dark backgrounds in their works.

In placing layers of the dark pastels onto the surface she builds an out-of-focus surface on which to lay the flowers and foliage.

Pastelmat can take many layers and in fact needs several before you are able to blend the pigment with fingers into the surface.

Stephie has a loose style and does not want to portray her subjects in the style of realism.

Before commencing the flowers and foliage Stephie identifies the direction of the light source as coming from the top right which will mean the left side will be darker. She adds Eggplant for more depth.

The bottom left corner will be the coolest value area and also the quiet area of the painting.

Always do darker than you think you will need to create contrast with subsequent layers of the painting.



## Flowers and foliage

Use gestural strokes for flowers and foliage gradually building the depth of field. Add to this by placing out of focus flowers in the background and your eye will take a journey through the garden.

When adding more detail to the flowers, Stephie moves up the value scale. Her colour choice is intuitive and instinct tells her when the values are correct.

As the painting progresses Stephie adjusts the darks, always putting the darkest darks against the lightest lights for contrast.

She suggests flowers and foliage with simple strokes and shows the character of her flowers by using angles in her pastel strokes. The greens of the foliage are varied, as are the hard and soft edges used to depict them.

Stephie uses neutrals ...cool greys and blues for the shadowed side of the flower and lighter for the highlighted petals.

Schminke white is her preference for the purest white and is used for the final highlights.

Nupastels are a hard pastel and useful for defining edges or adding details.

As the painting was built, Stephie pointed out the use of larger detailed flowers in the foreground to give depth and the final layer to the work. She again adjusted her lights and darks, checking values.

Stephie added flowers where needed to balance the composition even if they did not appear in the reference photo.

At the end of her piece Stephie checks for harmony of shapes, colours as the eye moves through the painting from front to back. She points out that she is not conscious of the Focus Point necessarily when painting and is flexible to change as long as it flows.

Before Stephie signed her work she related how her signature is in memory of her Dad. Then she considered where to place it and what colour to use, before signing in the quiet area of the bottom left.

## Storing her work

Stephie took us on a tour of her studio and showed us how she stores her finished work.....Covered with glassine and hung on a rail with clip style skirt hangers. They are all categorised so she knows where they are for sale purposes.

## Set Up

Using one wall of her studio as an easel...a vertical surface

The painting area is covered in black foam core



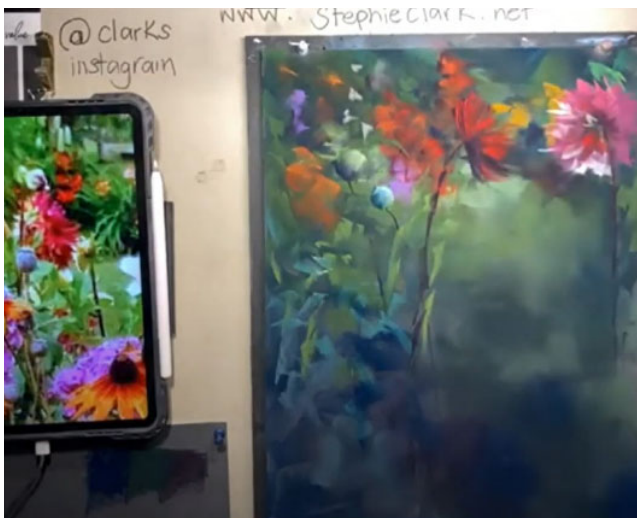
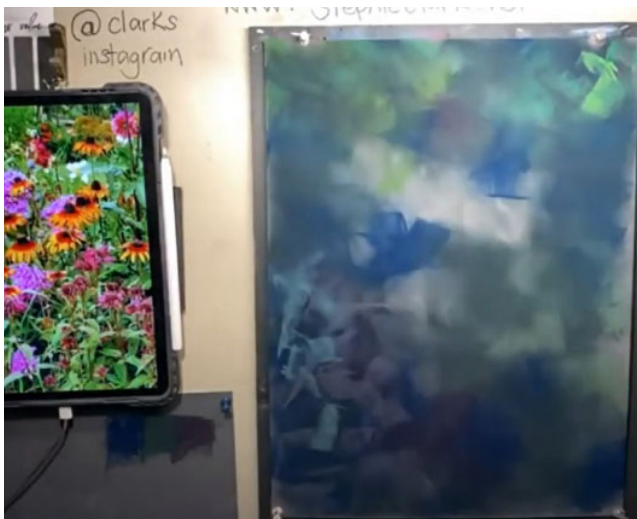
The paper is held with 4 broad topped pins which hold the edge of the paper without piercing it.

A dust catcher is pinned below her paper.

Uses a small air purifier from Bunnings

Working pastels are in a tray to her left

Pastels stored in large tool drawer cabinets.



Stephie is an energetic, spontaneous, self taught artist with a passion for flowers.

Thank you Stephie for sharing your process with us tonight.

## Zoom Demo with Janet Hayes - March 2022

Report by Christine Leaming

### Figurative Study by Janet Hayes

Ann, Janet's sister is tonight's model for the figurative study.

Janet's approach is to focus on the whole body.

The pose tonight is of Ann seated in a cane chair wearing a swimming costume, sarong and wide brimmed hat.

#### Materials

- Canson Mi Tientes paper in a mid tone grey, using the smooth side. This is preferred over white paper to avoid making "mud"!
- Rembrandt pastels - as they offer a good tonal range with Neutral colours positioned close and brighter colours further away from Janet.
- Vine charcoal
- Board of Foamcore with padding
- Bulldog clips

Using a View Finder, Janet chooses the position of the subject on the paper. A compositional sketch is drawn in charcoal and using a straight line (paint brush held up) to check for the correct position of components eg. the shoulder in relation to the chin and hat.

Once the initial drawing is done, Janet measures using a stick with arm extended checking the length of the face, fitting in components etc so that everything is in proportion. Any adjustments are made and rubs back lines with a paper towel.

In a figurative work it is not necessary to detail features, just the suggestion.

Refine the sketch by measuring lines to depict the big shapes eg. clothes Janet drew over the piece with vertical line from the side of the face to cross check the position of the arms and hands, looked for curved lines...adjusted the arm. Outline the hands, check length, shape in relation to the arm, position of fingers, knuckles.

Observe the model for accuracy, where things are in relation to each other, look for differences.

Then Janet was ready to shade in the hair and checked the shape of the hat brim and made sure that the hat fits on the head...get the crown right.



She then put in the cane chair as this helps ground the model.

Next the details on the face are suggested. In Figurative pieces it is nice to get a likeness but not as important as in a portrait.

Janet measures again...corners of mouth in relation to the nose, then the mouth is positioned, shape of hair is refined.

### **Colour**

Block in lights. On the hat, follows the direction of the light...squint...it might follow the contour of the clothing with a line and then soften the edge towards the flesh.

Soft edges give a roundness of form.

Janet continued to use light pastel to define the highlights over the figure and chair.

At this point the drawing reveals a simple representation of the figure.

Dark brown is used for shadows on hair/ eyelash line, line between fingers and sides of the arms. Flinders Blue violet is used as a dark on the hair...squint looking for darkest darks. Through directional strokes, Janet gives movement to the hair.

Continue to block in the darks on black swimsuit without using black pastel, and model the figure through tone. When applying the pastel to represent clothing, Janet uses strokes which emphasise the form beneath the clothes. Teal/blue green is chosen for the sarong and is then used somewhere else in the piece.

Burnt Sienna is placed in the chair where it catches the light and also on side of nose, cheek, neck. A softer application on the face is needed. Red/violet for mouth centre line to suggest lips.

Warm deep colour is applied for tones on the face, under brim and on the crown of the hat. Added reddish tone to darker areas of the face and body

light blue to highlights and purple to sarong.

### **Bright colour**

Red is added to the lips and Janet works mid tones onto the edge of darks. She wants it to be bold in mid tones to give a softer rounder look to face and arms.

Soft Gold is used on the background next to the figure to push the shoulder forward and to define the edge of the hat.

Janet adjusts the tone of the background against the dark of the hair to benefit the figure. This colour is then used on the body, under the hat brim to add brightness to the mid tones.

English Red is used on the face and orange is added to the skin for warmth. Aqua is used on the sarong, hat band as Janet works over the piece, adding the strong bright colour.

A blue/grey lightens up the shiny swimsuit and details on the face are lightened with soft marks.

Janet worked over the figure at least 10 times tweaking and building to achieve the final result. Once enough pastel is on the paper it becomes more fluid and paint like and blends more easily.

## TIPS

Measuring is important!

Work from large shapes to small

Starting at the head gives a point of reference

Padding of the paper allows different pressure of application of pastel

Keep it simple at the beginning

Avoid Black and dark grey

Use each colour in another area of the painting

Use strokes of pastel like a brush...break pastel into smaller pieces to achieve this

Top lip usually cooler than bottom lip

Apply Vine charcoal to darken colour areas

Brighter colours come forward

Strong bright colour will stand out too much unless used more than once

If marks too strong, soften with finger



## Studio Lighting

Photographic lamp or a tungsten light

A compact fluorescent lamp on Janet (for Zoom)

A doughnut shaped LED Selfie lamp over the easel. This is clamped on with a flexible arm with warm/cool settings

South facing Window

**PLEIN AIR PAINTOUT @ STANTHORPE**

**Date: 19th to the 29th April 2022**

EVERYONE WELCOME EXPRESSIONS OF INTEREST

Hi to you all, Well, as we are drawing closer to the end of another crazy year, and if you're anything like me, I like to plan ahead and lock in my favourite arty things to do for the following year and maybe Stanthorpe is one of them...

As you are probably aware, I have taken over organising the scheduled events for 2022 from Betty Sutton (yikes a big task) and I have incorporated a few new interesting things to do that I hope you will enjoy...more about that later!

To recap, for the newbies on the mail list, during the past few years a group of Happy Painters from Brisbane and surrounds have joined together for a week or more to paint plein air in and around various locations, surrounding areas & properties in Stanthorpe including Girraween National Park. This is a free non profit event that has always been organised by fellow artists for the enjoyment and fellowship of like minded people to come together and be creative.

As you are aware, because of Corona virus, we

have had to cancel an event, coupled with fires, water restrictions and a severe drought taking their toll in that area. The economy of The Granite Belt and surrounding districts still need help and the support from the input of visitors. With this in mind, and still abiding by ongoing health regulations, we have confirmed the dates for 2022. DATES: 19th to the 29th April 2022 (N B. Due to the demand of available accommodation we have made a pre

booking of all the Motel rooms and all the snugs (under the name of the Artist Group.) First in first served to enjoy the 10% discount on accommodation.

Please book directly at the Top of the Town and mention

your choice of Caravan site, Campsite, Cabin, Homestead Motel Room or Snug Room and the days and dates which you choose to attend.

For further accommodation enquiries please contact Top of the Town Tourist Park, 10 High St, Stanthorpe ph 07 4681 4888. Upon registration you will be sent an itinerary of proposed painting activities ....don't forget YOU can stay for as long as you like .....or just a few days ..... just email your expression of interest to Ron Bryant at

[ron@stanthorpepaintout@gmail.com](mailto:ron@stanthorpepaintout@gmail.com)

For further enquiries please contact Ron Bryant.

Ph 0408 884 346



# The Pastel Society of Australia ANNUAL AWARDS EXHIBITION

1st to 4th September 2022

Held at the Event Centre during the Australian Pastel Expo in Caloundra, Sunshine Coast

Dear PSA Members,

I am writing to let you know that the Annual Awards incorporating the Alexandra Awards, for 2022 will be held in conjunction with EXPO at the Event Centre, 20 Minchinton Street in Caloundra. The International Guest Tutor for EXPO, Tony Allain, will be the judge. Our sponsors [softpastels.com.au](http://softpastels.com.au), Art Spectrum, Art House Reproductions, Arthouse Northside and the Estate of Barbara Alexandra are to be thanked again for their ongoing and faithful sponsorship of the PSA.

On the last few pages you will find Conditions of Entry for you to print out and keep for reference as it has the dates and addresses that you need for participation, so you will have lots of time for preparation. Thank you to Tricia Taylor and Priscilla Lawrence for assisting in putting these Conditions together.

The announcements and presentation of the prizes for these Annual Awards will occur at the EXPO Gala Dinner at the Caloundra RSL on Saturday evening the 3rd of September at 6pm to 9pm. It is important for you to know that you do not have to attend EXPO, in order to enter the Awards or to attend the Gala Dinner. Also, if you should wish to visit the Trade Show at EXPO on the Saturday afternoon, you will be welcome. To book your tickets to this Gala Dinner presentation event (any number of guests you like) go to <https://www.trybooking.com/BOQWA> and only select the Gala Dinner (under the purple header). You will also need to complete page 2 for data collection. Then go to page 3 to pay. If you have any issues, please call Vanessa on 0414571090 or email to [treasurerozpastels@gmail.com](mailto:treasurerozpastels@gmail.com)

Bookings for the Gala Dinner close on 31 July.

The exhibition of the entries will make a fabulous show, and you do not have to attend EXPO in order to visit the Exhibition of works. For those not attending EXPO, it would make for a great day out to visit the Exhibition and stroll through Caloundra.

I look forward to another wonderful Exhibition of pastel - and to showcasing the fabulous standard achieved in the art of the members of PSA,

Tricia Reust

President

The Pastel Society of Australia Inc

# AUSTRALIAN PASTEL EXPO

August 31<sup>st</sup> - 4<sup>th</sup> September 2022 in Caloundra, QLD

Hi Fellow Members,

Our website now has a FAQ page with lots of questions answered. The question we receive the most is 'how many workshops can you do'. Both the Golden Ticket and the general ticket allow you to do 2 workshops/Plein Air and 2 days of demos. Any workshop spaces left on 31 July will be advertised on the Pastel EXPO website and we will also send an email to all students. You will be able to convert Demo days to extra workshop days by sending an email request which we handle in strict receipt order.

## COVID 19

A reminder that we must comply with all the house rules of the Event Centre Caloundra. If masks are required, please make sure that you bring yours with you. Make sure you have pre-loaded the QLD Check in Qld App on your smartphone, available on the app stores, and have uploaded your COVID tick. If you are coming from New Zealand, please let us know if you have problems with certificates uploading.

## Framing, transporting and wrapping paintings

Our sponsor, Sunshine Coast Art and Framing will be in the foyer at the Event Centre. They will have supplies available for purchase for framing and safely packing any art works that have been created at EXPO. These products will be available at the EXPO or can be pre-ordered from their website. They have pre-made standard size wooden frames as well as lightweight corflute reusable display frames with lightweight dossier cases and Crystal bags. Great for bringing entries to the Annual Competition or for taking home those gems you create here at EXPO.  
<https://artframes.com.au>

Head to the website today to see all the workshops, demos and plein air events so you're ready to book your spot on registration day. There's a lot to choose from!

We also have accommodation options, materials lists and tutor's profiles available at <https://www.australianpastelexpo.com.au/>

Visit the Australian Pastel Expo website to find out more!

**REGISTRATIONS OPEN NOW**

<https://www.australianpastelexpo.com.au/>





## Featured EXPO Tutors

### JULIE AND MICHAEL FREEMAN

#### International Guest Tutors

Julie and Michael are international award winning artists from New Zealand who share a love of pastel and realism. Both have had a fascination with realism since childhood and in both of their artwork they strive to create images that have greater depth and feeling than can be achieved with a photograph.

Julie is a Master Pastelist (MPANZ), is in the Master Circle of IAPS and is a Signature Member of the Pastel Society of America (PSA).

Michael is a Master Pastelist (MPANZ) is in the Master Circle of IAPS, is a Signature Member of the Pastel Society of America (PSA) and has a Master of Fine Arts degree.

Between them they have over 40 years of teaching experience.



### LYN HENRY

#### International Guest Tutors

Lyn Henry is the current President of the Pastel Artists of New Zealand. (PANZ)

With 20 years' experience working with pastels, Lyn has developed a unique approach to her art. She sees light and colour in everything including numbers, music and days of the week! Her art has evolved from realist paintings into expressing stories, memories, and feelings.

For Lyn, abstract expressionism has made her a technically stronger artist, and gives her freedom to explore the 'what if' of pushing ideas through texture, the layering of colour, and having fun! She is Vice President of PANZ, lives in the beautiful south of New Zealand, and tutors and mentors pastellists in the southern region. She is delighted to share her ideas at Expo!



Read more here: <https://www.australianpateleexpo.com.au/tutor>



# Australian Pastel EXPO 2022

## WORKSHOPS AND DEMO SCHEDULE



**THURSDAY 1<sup>st</sup> September 2022**

TUTOR	CODE	THEME
<b>WORKSHOPS 8.30AM - 4.30PM</b>		
Julie and Michael Freeman	TW1	Animals - Day 1 of 2 - Mastering Animals (participants MUST do both day 1 and 2)
David Wells	TW2	Portrait - Introduction to Pastel Portraits
Penelope Gilbert Ng	TW3	Portrait - A.D.E.P.T Portrait Workshop (Artistic-Dynamic-Expressive-Portraiture-Techniques) <b>Experienced students only</b>
Anne Yang	TW4	Landscape - Creating depth in Landscape
Sandra Temple	TW5	Animals - Camouflage
Lyn Henry	TW6	Abstract - Seeing Small Paintings in Big Things
Lyn Mellady	TW7	Art Theory - Making your personal artistic mark
<b>DEMONSTRATIONS 8.00AM - 10.00AM</b>		
Leonie Duff	TD1AM	ZOOM - Still Life; The way to learn everything about painting
Karol Oakley	TD2AM	Art Theory - Get Toned
<b>DEMONSTRATIONS 10.30AM - 12.30PM</b>		
Stephie Clark	TD1MM	Flowers - story of light
Lyn Diefenbach	TD2MM	Portrait - Portraits loose and lively
<b>DEMONSTRATIONS 2.00PM - 4.00PM</b>		
Tricia Reust	TD1PM	Mixed Media - New work surfaces from old
Janet Hayes	TD2PM	Figures - Drawing figures from life
<b>PLEIN AIR 8.30AM - 4.30PM</b>		
Regina Hona	TW8	Diving into Plein Air
<b>CRITIQUES - 15 MINUTES PER PERSON - THURSDAY</b>		
Tricia Reust	TC1	One on one 15 minute session with Tricia Reust between 9.30am - 11.30am
Lyn Diefenbach	TC2	One on one 15 minute session with Lyn Diefenbach between 1.30pm - 3.30pm
<b>PAINT AROUND EVENING 5.00PM - 7.00PM</b>		
Demonstrations	TDPA	Paint Around with Tony Allain, Lyn Diefenbach, Karol Oakley, Tricia Taylor and Tricia Reust.

# Australian Pastel EXPO 2022

## WORKSHOPS AND DEMO SCHEDULE



FRIDAY 2<sup>nd</sup> September 2022

TUTOR	CODE	THEME
<b>WORKSHOPS 8.30AM - 4.30PM</b>		
Julie and Michael Freeman	FW1	Day 2 of 2 - Mastering Animals (participants MUST do both day 1 and 2)
Regina Hona	FW2	Landscape - Water and Reflections
Stephie Clark	FW3	Flowers - Bloom with Grace
Tricia Reust	FW4	Mixed Media - Pastel over collage on canvas
Sandra Temple	FW5	Animals - Beautiful Birds
Tricia Taylor	FW6	Landscape - Sunset Skies
Lyn Diefenbach	FW7	Portrait - Portraits alive
<b>DEMONSTRATIONS 8.00AM - 10.00AM</b>		
Dawn Emerson	FD1AM	Zoom
Anne Yang	FD2AM	Landscape - Creating Depth in the Landscape
<b>DEMONSTRATIONS 10.30AM - 12.30PM</b>		
Lyn Mellady	FD1MM	Landscape - Submerged rocks at high tide
Penelope Gilbert Ng	FD2MM	Portrait - Let the Colour Sing - Vibrant colourful portrait - loose style
<b>DEMONSTRATIONS 2.00PM - 4.00PM</b>		
Lynette Orzowski	FD1PM	Demonstrating Canson Papers - 1 image on 3 different substrates
Louise Corke	FD2PM	Zoom - Art Theory; The Final Tweaks - Edges and Final Balances in any Genre
<b>PLEIN AIR 8.30AM - 4.30PM</b>		
Karol Oakley	FW8	Plein Air Confidence
<b>CRITIQUES - 15 MINUTES PER PERSON - FRIDAY</b>		
Tony Allain	FC1	One on one 15 minute session with Tony Allain between 9.30am - 11.30am
Lyn Mellady	FC2	One on one 15 minute session with Lyn Mellady between 1.30pm - 3.30pm
<b>EVENING DEMO 5.00 - 7.00PM</b>		
Tony Allain	FDMD	Landscape - Where the Land Meets the Sea

# Australian Pastel EXPO 2022

## WORKSHOPS AND DEMO SCHEDULE



**SATURDAY 3<sup>rd</sup> September 2022**

TUTOR	CODE	THEME
<b>WORKSHOPS 8.30AM - 4.30PM</b>		
Pauline Adair	SW1	Figures - Figures from Life
Tony Allain	SW2	Art Theory - Creativity Untamed
Lyn Diefenbach	SW3	Flowers - The Floral Portrait - Building the Illusion of Reality
Tricia Reust	SW4	Mixed Media - Pastel over Gesso Texture on paper
Janet Hayes	SW5	Portraits - Pastel portrait from a live model
Tricia Taylor	SW6	Art Theory - Making Your Artwork Sing - Understanding colour chords
Karol Oakley	SW7	Landscape - Traditional Landscape from the Heart
<b>DEMONSTRATIONS 8.00AM - 10.00AM</b>		
Cuong Nyugen	SD1AM	Zoom - Portraits
TBA	SD2AM	
<b>DEMONSTRATIONS 10.30AM - 12.30PM</b>		
Leonie Duff	SD1MM	ZOOM - Pastel Portrait- Pursuing the Poetry and Exploring the process
Stephie Clark	SD2MM	Flowers / Landscape - Channel your Inner Monet
<b>DEMONSTRATIONS 2.00PM - 4.00PM</b>		
Regina Hona	SD1PM	Landscape - The Magic of Water
Christine Clark	SD2PM	Animals - Painting your dog in pastels and charcoal
<b>PLEIN AIR 8.30AM - 4.30PM</b>		
Penelope Gilbert Ng	SW8	Plein Air
<b>CRITIQUES - 15 MINUTES PER PERSON - SATURDAY</b>		
Julie or Michael Freeman	SC2	One on one 15 minute session with Julie or Michael Freeman between 1.30pm - 3.30pm

# Australian Pastel EXPO 2022

## WORKSHOPS AND DEMO SCHEDULE



**SUNDAY 4<sup>th</sup> September 2022**

TUTOR	CODE	THEME
<b>WORKSHOPS 8.30AM - 4.30PM</b>		
Stephie Clark	XW1	Flowers - Provencal Poppies
Lyn Mellady	XW2	Landscape - The slow and up-tempo dances of light and water
Julie and Michael Freeman	XW3	Still Life - Exploring Light, Form and Textures
Penelope Gilbert Ng	XW4	Landscape - Landscape Tell the Story - <i>Intermediate to Advanced</i>
Lynette Orzowski	XW5	Animals - Animals in Pastel - Creating the Story
Christine Clark	XW6	Figures - Fabulous Figures in the Environment
Regina Hona	XW7	Landscape - Making Water Look Wet
<b>DEMONSTRATIONS 8.00AM - 10.00AM</b>		
Harley Brown	XD1AM	Q & A Session on Zoom - An Armchair Chat with Harley
TBA	XD2AM	
<b>DEMONSTRATIONS 11AM - 12.30PM</b>		
Tricia Taylor	XD1MM	Landscape - Sunset over the Ocean
Sandra Temple	XD2MM	Animals - Wildlife in action
<b>DEMONSTRATIONS 1.30PM - 3PM</b>		
Janet Hayes	XD1PM	Pastel Portrait - Portrait demonstration
Lyn Diefenbach	XD2PM	Flowers - Florals; Wow in 2 hours
<b>PLEIN AIR 8.30AM - 4.30PM</b>		
Tony Allain	XPA	Chasing the Light
<b>CRITIQUES - 15 MINUTES PER PERSON - SUNDAY</b>		
Karol Oakley	XC1	One on one 15 minute session with Karol Oakley between 10.00am - 12.00pm

## Charcoal/Grey Pastel PORTRAIT WORKSHOP TUTOR: Tricia Reust

### Explore the portrayal of the human head.

#### Charcoal/Grey Pastel Portrait Workshop

We will cover theory of facial features and basic design concepts with portraits and explore the portrayal of the human head. On the first day, two quarter sheet portrait head studies will be created - one incorporating the theory covered, and the second work exploring using charcoal as a wet underpainting. On the second day, participants will create a larger portrait using charcoal, and white and grey pastel. Pastel stroke making will be explored and using pastel wet.



#### **About your Tutor**

*Tricia Reust is a visual artist working in most media. Her work is founded on strong drawing and design principles, and a broad exploration of art materials.*

*Tricia won the National Mortimore Prize in 2012; recorded a television episode with Colour in Your Life; over many years has had several articles published in the Australian Artist magazine; and has work in all four "Incite – The Best of International Mixed Media" publications.*

*Tricia has published her book "Landscape as Story – Directions for Creating Expressive Landscapes" and her three instructional DVD's are available through Pulsar Productions.*

#### **Details:**

Workshop Venue: Queen Alexandria Home, 347 Cleveland Road, Coorparoo, Queensland 4151

Date: September 24 & 25 2022

Time: 8.30 – 4pm

Cost: \$180 for PSA Members, \$220 for non-members

Find more information and book online at

<https://pastelsocietyofaustralia.com.au/workshops-brisbane/tricia-reust-charcoal-portraits/>

## **Pastel Society of Australia Inc**

### **COVID POLICY**

**The PSA Committee is following Qld Govt guidelines in forming the PSA Covid Policy. This current document will be before the Committee for ratification:**

- As you know, the PSA's COVID policy is and always has been to comply with QLD government regulations.
- The QLD government has announced that from 6pm AEST Friday 4 March 2022:
- \*Masks will no longer be required indoors, except in healthcare settings, residential aged care, disability accommodation, prisons, public transport, airports and on planes.
- \*Masks will still be recommended whenever you can't social distance.
- \*Venues and events will no longer have density limits.
- \*Until then, current face mask requirements and other public health and social measures remain in effect.
- \*You must continue to check in at businesses or venues where there is a requirement to be vaccinated to enter.
- We ask that all PSA members and visitors entering all areas in our venues continue to:
- \*Provide proof of vaccination or medical contraindication
- \*Check in using the Check In QLD app if applicable
- \*Sanitise hands and surfaces
- \*Maintain social distancing of 1.5 metres if possible
- \*Stay home if you are feeling unwell and follow current health advice
- We appreciate your cooperation and will provide an update when there are any changes.

## Reading around Landscape 2022

*A book review by Gillian Collom*

Many books about today's landscape painting haven't excited me much. However I discovered a large book on contemporary landscape in the Brisbane City Council Library (Landscape painting now) with inspiring colour images of ambitious and vibrant paintings alongside quiet and soulful reactions to place. Now that really stimulated my interest in scapes!

Works are by artists from almost 25 countries and born over 7 decades. The collection explores a wide range of ways to depict the natural world. Images are gathered into chapter titles that break away from geography or timelines (e.g. 'Realism and beyond', 'Constructed realities') and cover traditional approaches through to loose gestural abstraction.

Two of my recent discoveries in the BCC Library explore paintings of the vast areas of Australia, especially the west and centre.

Philip Hughes, a British artist, has visited Australia over three decades. His breathtaking natural landscapes are often inspired by maps or aerial photos. The bold and sometimes graphical works include sketches and much larger artworks of wide-open spaces.



*Philip Hughes - Painting the Ancient Land of Australia*

Ross Booker, a Queensland artist, has exhibited in a number of Brisbane galleries. He spent holidays in Central Australia, inspiring this colourful collection of artworks. But the book also includes Ross' personal photos that helped me see the way he does. The graphical lines and shapes in his paintings are explained vividly by the patterns obvious in photos of branches, rocks and grasses.

Recommendations:

- For an up-to-date, international sweep across landscape painting: Todd, Bradway (Ed.) 2019, Landscape painting now : From pop abstraction to new romanticism, Thames & Hudson, London
- For a bold way to capture the vast landscapes: Hughes, Philip 2020, Painting the ancient land of Australia, Thames & Hudson, Melbourne.
- For a perspective that's different from the tourist view of Central Australia: Bates, Elizabeth and Booker, Ross 2013, Out of Alice: Painting and drawing in central Australia, artHIVES.



*Ross Booker*



# “The Pastel Society of Australia Annual Exhibition 2022”

1st September to 4th September 2022

Held at the Event Centre during the Australian Pastel Expo in Caloundra, Sunshine Coast

## Conditions of Entry

### Diary of Dates

**Entries open** Friday 1st April 2022

**Entries close** Friday 8th July 2022

Pre- Selection of hanging exhibition announced 15th July 2022

**Drop off of hanging exhibition:** 11am-2pm Wednesday 31st August 2022 Event Centre 20 Minchinton St, Caloundra QLD 4551. (please read labelling and d-ring instructions)

**Winners Announced:** Gala Dinner from 6pm Saturday 3rd September 2022. RSL Caloundra. Tickets available via Australian Pastel Expo website. [www.australianpastelexpo.com.au](http://www.australianpastelexpo.com.au)

**Pick up:** Sunday 4th September 1:30pm – 4:30pm

### Entries

1. All entries are to be pastel (soft). Works may be on any surface including canvas, and mixed media is acceptable with at least 75% pastel on top.
2. Entries must be the original work of the entrant, which precludes works undertaken in workshops or under tutelage, and/or copied from any source other than that belonging to the entrant. Source material to be available if requested. Entries must have been completed in the last two years and must not have previously won any award in any competition in the previous 2 years prior to 1st April 2022 excepting PSA monthly online Zoom competitions.
3. Maximum Size of finished painting: 75cm x 95cm (including frame)
4. Maximum of 3 entries/member – in different categories and only one painting per category. Non-PSA Members maximum 1 entry. All PSA members must be financial at time of entering competition and time of hanging exhibition.

5. Members Entry fee of \$25 for each painting (max 3). Non-Members \$60 (one only).
6. All works pre-selected for the hanging exhibition at Event Centre Caloundra must be for sale and there is a 30% commission on sales.
7. Entries are open from April 1st, 2022, via the website [www.psacomps.com.au](http://www.psacomps.com.au) which must include uploading of high resolution images of artwork (Max 2mb). Payment via direct deposit or Pay Pal is available. You will be unable to see any of the entries until the Expo event at Event Centre Caloundra. All entries not included by pre-selection in the hanging exhibition will be displayed on screens during the Expo event. There will be no refund of entry fees for any painting not pre-selected for exhibition.
8. All Entry forms to be completed with payment of entry fees by **Friday 8th July**. If any difficulties arise, please contact [secretaryozpastels@gmail.com](mailto:secretaryozpastels@gmail.com) or PSA Exhibition Coordinator Tricia Reust [triciareust@gmail.com](mailto:triciareust@gmail.com) or phone 07 3889 4619. **NO LATE ENTRIES ACCEPTED.**

## Prizes

Categories for 2022:

- People/Animals
- Scapes
- Still Life
- Abstract

All paintings can be traditional or contemporary in style.

Prizes in each category except Abstract: 1st \$1000, 2nd \$500, 3rd \$300.

### **Art Spectrum Abstract Prize:**

1st prize \$1000 (product from Art Spectrum)

2nd prize- High Resolution Digital Art Capture of your artwork for a giclee reproduction

The Pastellist of the Year (\$500) is only for PSA members and will be chosen from the four 1st Place awards submitted in each category.

Arthouse Northside Peoples' Choice Award (\$150 Gift Certificate). Chosen by members of the public at the Event Centre Caloundra during the exhibition. This gift certificate can be accessed online as well as in person at the art store (in Deagon, Brisbane).

**Alexandra Award** entries are invited for PSA members only who have never won a first prize award in any competition (PSA or other) with a pastel painting. Members may enter both Sections and the General Competition (3 paintings in total).

Title "Harmony"

Prizes 1st \$600 2nd \$200 3rd \$100

## Pre-Selection and Judging

All entries submitted will be presented for review online to a pre-selection panel, from which 100 entries will be shortlisted to meet the hanging space requirements of the Pastel Society Annual Awards exhibition.

1. All signatures on entered artworks will be digitally blocked out for pre-selection only. Entries submitted must be photographed before framing.
2. Once the pre-selection process has been completed, all entrants will be advised of the outcome by the 15th July 2022 and confirmation from artist will be sought to guarantee that the work will be available for exhibit during the dates of 31st August 2022 and 4th September 2022.
3. An independent Judge is invited to select the prize winners of each section from the shortlisted 100 that are on display at the exhibition. The pre-selection panel and judge's decisions are final and no correspondence will be entered into.
4. Media reproduction of entries is allowed for promotional purposes by PSA.

## Presentation and Delivery of Works

5. All works for the physical exhibition to be clearly labelled on the back and framed in a professional manner.  
Title and Price. \_\_\_\_\_  
Section. \_\_\_\_\_  
Artist's Name. \_\_\_\_\_  
Contact Details. \_\_\_\_\_
6. All works are to be ready for display with hanging wire or cord and "D" rings firmly attached. Gallery specifics requires additional "D" hooks to be placed 75mm from the top of frame with the "D" facing upwards. This is essential. Please see diagram below for instructions.
7. All care will be taken in storing and hanging of artworks, but no responsibility will be taken by the PSA, or those associated with the Event Centre Caloundra
8. Exhibition will be held at Event Centre Caloundra 20 Minchinton St, Caloundra QLD 4551.
9. Receipt of works by hand at Event Centre Caloundra 20 Minchinton St, Caloundra QLD 4551. from **1pm to 3pm Wednesday 31st August 2022.**
10. Post courier/freight works, to PSA Exhibition Coordinator Tricia Reust 168 King Street, Clontarf, QLD, 4019 Australia. (This is not a drop off point for anyone wanting their work taken into the exhibition for them. This is for Couriered work only. Please make other arrangements if you require help to deliver your works on drop off day.) All works being couriered must be received by Friday 19th August 2022. Under no circumstances will the PSA incur courier/freight costs. All freight arrangements and costs must be organized and prepaid by the entrant. Payment of a \$10 repacking fee is required for the PSA to repackage your artworks, and packaging must be of a

standard to enable safe repackaging.

11. Personal collection of sold and unsold works will be after 1:30pm and until 4:30pm Sunday 4th September. No paintings may be removed before this date and time. There is no opportunity for storage, so any works remaining after this time will incur a significant PSA storage fee and/or be discarded. Freight works will be returned after this date.
12. All proceeds from sales and prizes will be paid by direct deposit into your nominated bank account within a month after the exhibition closes.
13. Digital enhancement techniques only permitted applied to the images are the use of the tools - rotating and cropping of the image. Any other digital enhancements are strictly forbidden. We are trusting in the integrity of entrants as to the accuracy of the photo submitted and be aware that you are signing an agreement to all Conditions as set out in this document.

Note# Because the pre-selection will be from online images, it is strongly suggested that you consider having professional photos taken of your work, (of course before framing!) or that you obtain assistance from a PSA member who knows how to go about photographing works to their advantage or view the advice in the PSA newsletter.

## **D Hooks**

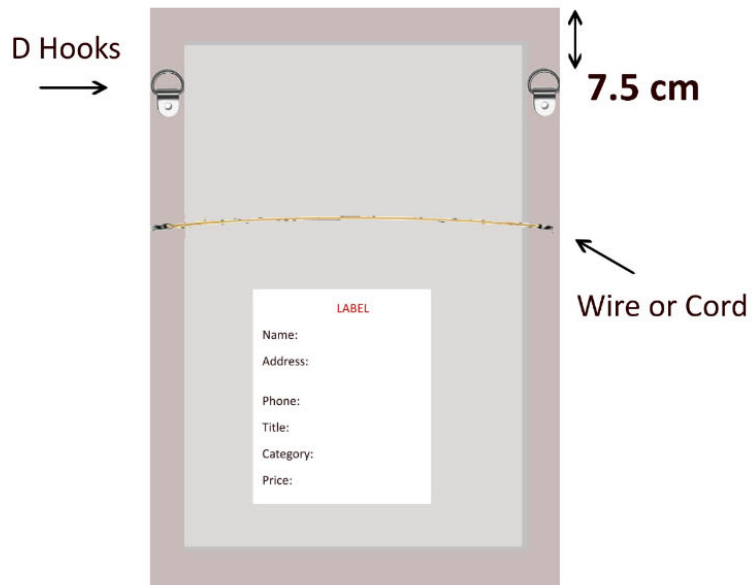
Tips: D-ring should be 15mm wide. Facing up.

75mm from the top of artwork to top of D-ring.

Rounded and not Triangular to fit our hanging system.

75mm from the top of

See next page for a diagram.



Note: Must be at least **1.5cm wide**  
and can be bought at Arthouse Northside or Oxlades

**Wire or cord is still recommended.**

# Your assistance in placing these D-rings on your artwork is extremely helpful to our volunteers that work hard to hang your artworks in a presentable manner. It saves a large amount of work, handling and keeping artworks hanging straight during the exhibition. Many thanks.

GWEN THIESFIELD

*Barbara Alexandra*



Subscribe to Soft Pastels and receive monthly specials and discounts. Enter your name and email address at [www.softpastels.com.au](http://www.softpastels.com.au)



The largest range of soft pastels and specialty pastel papers in Australia.

**Pastels**

- Art Spectrum
- Blue Earth
- Conte
- Generals
- Glinuit
- Holbein
- NuPastel
- Pan Pastels
- Rembrandt
- Schmincke
- Sennelier
- Unison

**Papers**

- Ampersand Pastel Board
- Colourfix
- Colourfix Smooth
- Fisher 400
- Hahnemühle Velour
- Hahnemühle Pastelfix
- Mi-Teintee
- Mi-Teintee TEX
- Pastelmat
- Sennelier Pastel Card
- Sennelier Velvet and Felt
- UART Premium

- We deliver Australia wide as well as internationally.
- We provide value pricing everyday and run monthly specials.
- We are a unique family run business with friendly service and help.
- Our range only consists of artist quality materials. New items are constantly sourced.

[www.softpastels.com.au](http://www.softpastels.com.au)

**OPENING HOURS**  
Monday - Friday 9:00am to 5:00pm  
Saturday 9:00am to 2:00pm

258 Brunner Road, Adamstown NSW 2260  
Phone: 02 4957 1880  
Email: [colours@softpastels.com.au](mailto:colours@softpastels.com.au)

## COMMITTEE

**President:** Tricia Reust  
presidentozpastel@gmail.com

**Vice President:** Sue Robinson  
suzart@live.com.au

**Secretary:** Kelcey Burman  
secretaryozpastels@gmail.com

**Treasurer:** Vanessa Thomas  
treasurerozpastels@gmail.com

## COMMITTEE MEMBERS:

Greg Steele, gregorymarj57@outlook.com  
Jan Lowe, jan.lowe@camberwellart.com.au  
Gillian Napper, gillnapper@gmail.com  
Angela Parr, ange@bingaragallery.com.au  
Christine Leaming, christine.a.leaning@gmail.com

## NEWSLETTER

Newsletter Editor: Jeanne Cotter,  
pastelnewsletter@gmail.com  
Newsletter Team Postal Distribution: Margaret  
Ollerenshaw

## WORKSHOPS

Workshop Coordinator: Hettie Rowley,  
hettie@magickmirrors.com  
Workshop Supervisors:  
Brisbane: Greg Steele gregorymarj57@outlook.com  
Sunshine Coast: Vanessa Thomas  
TreasurerOzpastels@gmail.com  
Gold Coast: *Vacant*

## ANNUAL EXHIBITION

Exhibition Coordinator:  
Tricia Reust triciareust@gmail.com  
Exhibitions Team: Priscilla Lawrence

## WEBSITE

Webmaster: Hettie Rowley

## MEETINGS

Meeting Coordinator Sunshine Coast: Vanessa  
Thomas TreasurerOzpastels@gmail.com

## MEETING DEMONSTRATOR COORDINATORS

### BRISBANE

Brisbane Coordinator: Hettie Rowley  
Meeting Reception Coordinator: Pauline Meizer  
Meeting Reception: Andrea Willis  
Meeting Supper Team: Gwen Thiesfield & Margaret  
Ollerenshaw  
Audio Visual: Mark Lawrence

### GOLD COAST

Gold Coast: Petronella van Leusden

### SUNSHINE COAST

Sunshine Coast: Annette Irvine  
Audio Visual: *vacant*

## MARKETING

Public Officer: Gillian Collom  
publicofficerozpastels@gmail.com

## SOCIAL MEDIA

Penelope Gilbert Ng and Louise Corke  
email: commsozpastels@gmail.com

*If you'd like to join the committee and  
contribute to this wonderful Society, please  
get in touch.*

## **Publish your artwork online!**

Here is a great opportunity for you to have your artwork published on our Oz Pastel website. It is absolutely free for you as a member of the PSA. So what are you waiting for?. Here is a list of the required items:

### **Photos:**

A clear image of yourself. A close up portrait works best.

5 x or more (up to 10) images of your artwork - pastel obviously. Size: aim for 600 px (pixels) wide and at least 500kb or larger. Background cropped and image in focus please. Do not photograph your work already behind glass as that will leave a reflection. Unframed only images.

**About the Artist:** A short biography or resume of your artistic career and your motivation for your art.

Here are two examples: *'Anne is a member of the Pastel Society of Australia. Anne conducts public painting demonstrations and teaching workshops in the pastel medium and has commenced a weekly pastel painting class in Cooroy. Anne regularly exhibits with the Pastel Society of Australia, Kenilworth Celebrates art show. Anne's paintings are represented at the Montville Art Gallery, Main St Montville, Qld. Anne has won many awards over the years.'* OR...

*'The beauty and serenity of creation is what draws me to paint. I love to get the feel of the moment whether that is the warmth of the light, the velvet feel of a petal or the fold of a cloth. As a seascape artist I enjoy capturing the movement of the waves and the play of light on the sand. There is something quite spiritual and musical in the ocean. It is the light, the rhythm and the emotion that entices me to paint no matter what the subject.'*

**Contact:** Your phone number/numbers, email address, website address if any, any social media accounts you would like to add. (Instagram, Facebook, Twitter)

Please send this information to Hettie in the following format.

Images in Jpeg format. 600px wide.

Your text in a Word document.

Contact Kelcey Burman on 0413 027 463 or [secretaryozpastels@gmail.com](mailto:secretaryozpastels@gmail.com) OR Hettie Rowley on 0406 180 121 or [hettie@magickmirrors.com](mailto:hettie@magickmirrors.com) for more information



The PSA newsletter is released bi-monthly. The next newsletter is due out in JUNE 2022.

**CLOSING DATE: Closing Date for June 2022 Newsletter is the 20th of May 2022.**

Articles submitted AFTER this date WILL NOT BE ACCEPTED.

**SEND TO:** All submissions are to be sent to JEANNE COTTER at [pastelnewsletter@gmail.com](mailto:pastelnewsletter@gmail.com)

**FORMAT:** The preferred format for written articles is Microsoft Word sent as an attachment to your email. Articles sent from an iPad or in the body of an email are not acceptable. Please send photos as jpg attachments to your email, not embedded in an email, and title each photo with your name and a number (eg: janesmith001.jpg) rather than send as a file number (eg: 2200957694.jpg). Please make ALL reports in text font ARIAL Size 12. Many thanks for your assistance.

**YOUR NEWS:** Please let us know of your pastel achievements. We want to celebrate with you!! The newsletter is a great way to let people know and to build your profile.

**YOU CAN CONTRIBUTE:** We'd love to hear about Workshops and Demonstrations that you've attended. Be willing to write up meeting demonstration and workshop reports and send to the Newsletter team ASAP - within a week of the event - (PLEASE not at the last minute). Many thanks.

## NEWSLETTER ADVERTISING RATES

Are you interested in advertising your workshop, tour or classes in our PSA Newsletter?

Page Size	Millimetres & Orientation	PSA Member Rate	Non-Member Rate
1/4 page	90w x 124h (portrait)	\$15	\$25
1/2 page	186w x 124h (landscape)	\$30	\$50
Full page	186w x 273h (portrait)	\$60	\$100
Email Attachments to PSA Members		\$10	\$20

1/4 page advertisements for events such as paint-outs, exhibitions and NFP that are arranged and held by PSA Members are free, larger advertisements will attract Members Rates (eg; Stanthorpe Paintout).

Advertisements for PSA monthly events, workshops and expos will be at no cost.

Advertisements for non-members of the PSA will be charged at the Non-Member rate.

*Note \* These activities are not covered by the PSA volunteer's insurance or the PSA responsibility.*

### FILE TYPE REQUIRED

All advertisements must be supplied as a JPG image at strictly the correct size and orientation as listed in the table above. No variations will be accepted.

### HOW TO SEND YOUR AD

Please email the image of your advertisement to Jeanne Cotter at [pastelnewsletter@gmail.com](mailto:pastelnewsletter@gmail.com). Once your ad has been received and approved an invoice will be issued to you from the PSA Treasurer.